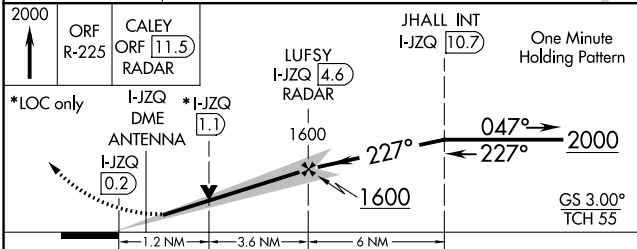
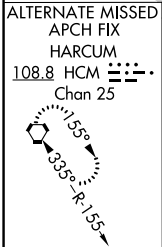
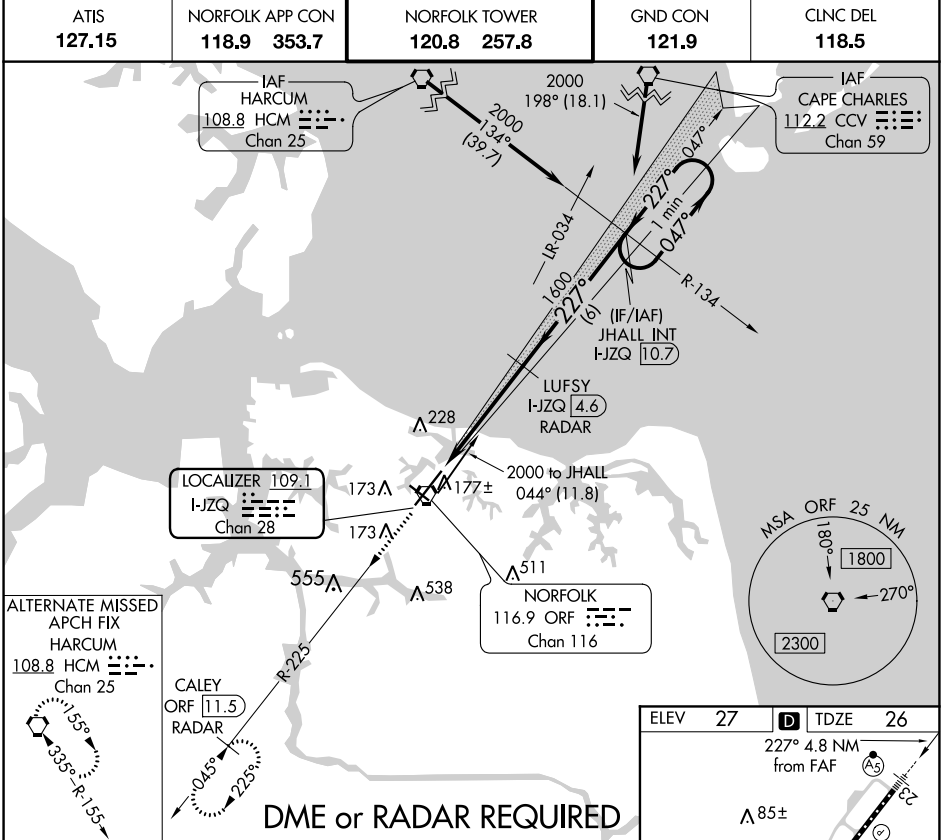


LOC/DME I-JZQ <b>109.1</b> Chan 28	APP CRS <b>227°</b>	Rwy Idg TDZE Apt Elev <b>8995</b> <b>26</b> <b>27</b>
--	------------------------	--

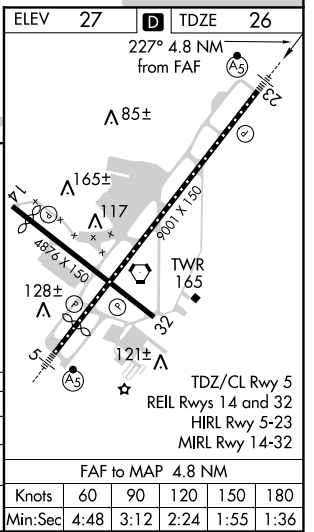
# ILS or LOC RWY 23

NORFOLK INTL (ORF)

	MISSED APPROACH: Climb to 2000 on ORF VORTAC R-225 to CALEY/ORF 11.5 DME/RADAR and hold.			
	ATIS <b>127.15</b>	NORFOLK APP CON <b>118.9 353.7</b>	NORFOLK TOWER <b>120.8 257.8</b>	GND CON <b>121.9</b>



CATEGORY	A	B	C	D
S-ILS 23	226-1/2		200 (200-1/2)	
S-LOC 23	460-1/2	434 (500-1/2)	460-3/4	434 (500-3/4)
<b>C</b> CIRCLING	480-1 453 (500-1)	540-1 513 (600-1)	540-1 1/2 513 (600-1 1/2)	900-2 3/4 873 (900-2 3/4)



NE-3, 13 AUG 2020 to 10 SEP 2020

NE-3, 13 AUG 2020 to 10 SEP 2020

ELEV 27	<b>D</b> TDZE 26
227° 4.8 NM from FAF	
One Minute Holding Pattern	
GS 3.00° TCH 55'	
FAF to MAP 4.8 NM	
Knots	60 90 120 150 180
Min:Sec	4:48 3:12 2:24 1:55 1:36