

WAAS CH 65736 W35A	APP CRS 355°	Rwy Idg TDZE 1733 Apt Elev 1733	3771
--	------------------------	---	-------------

RNAV (GPS) RWY 35

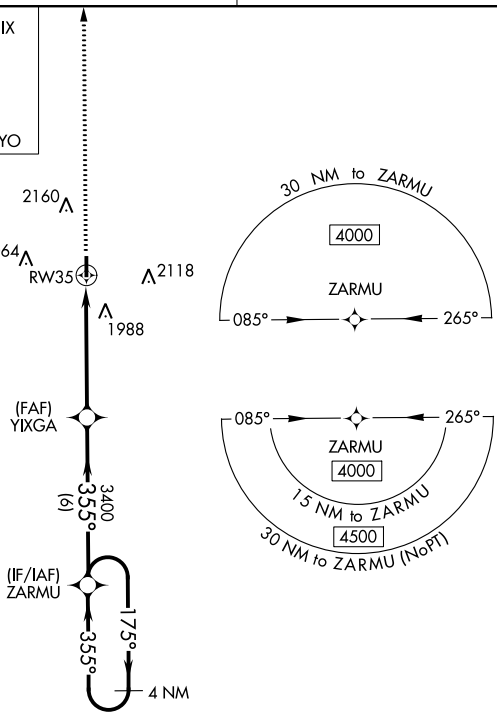
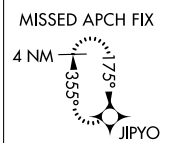
THOMAS MUNI (104)

Baro-VNAV NA. Use Weatherford altimeter setting; when not received, use Clinton Rgnl altimeter setting. DME/DME RNP-0.3 NA. Night landing: Rwy 17 operational VGSI required, remain on or above VGSI glidepath until threshold. Helicopter visibility reduction below 1 SM NA.

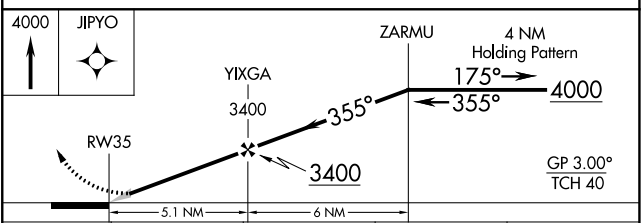
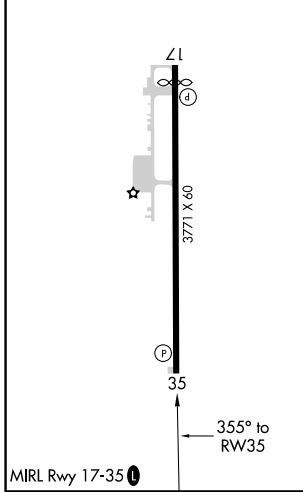
MISSED APPROACH: Climb to 4000 direct JIPYO and hold.

OJA AWOS-3 118.575	FORT WORTH CENTER 128.4 269.37	CTAF 122.9
------------------------------	--	----------------------

A
2479



ELEV 1733	TDZE 1733
-----------	-----------



CATEGORY	A	B	C	D
LPV DA	2035-1	302 (400-1)		NA
LNAV/VNAV DA	2035-1	302 (400-1)		NA
LNAV MDA	2220-1	487 (500-1)		NA
C CIRCLING	2280-1 547 (600-1)	2460-1 727 (800-1)		NA

SC-1, 16 JUL 2020 to 13 AUG 2020

SC-1, 16 JUL 2020 to 13 AUG 2020