

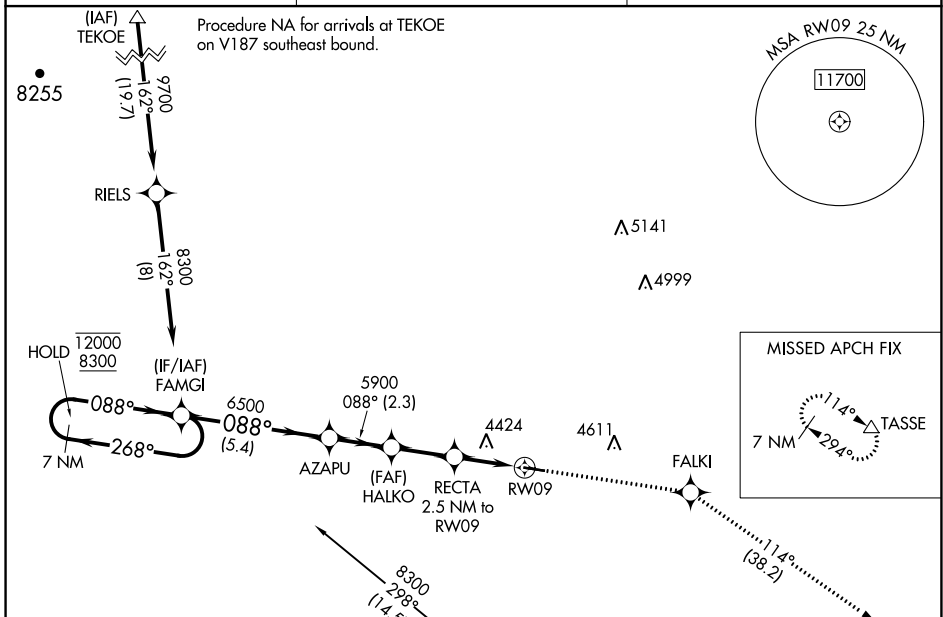
WAAS CH <b>99443</b> <b>W09A</b>	APP CRS <b>088°</b>	Rwy Idg <b>4200</b> TDZE <b>4312</b> Apt Elev <b>4312</b>
--	------------------------	---

# RNAV (GPS) RWY 9

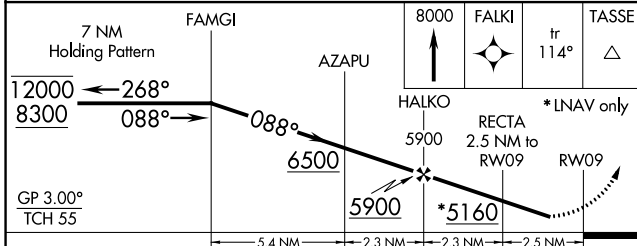
WHEATLAND COUNTY AT HARLOWTON (HWQ)

<p><b>RNP APCH.</b></p> <p><b>▼</b> Rwy 9 helicopter visibility reduction below 1 SM NA. Baro-VNAV NA. <b>▲ NA</b> Use Lewistown altimeter setting. Straight-in Rwy 9 NA at night, Circling Rwy 9 NA at night.</p>	<p><b>MISSED APPROACH:</b> Climb to 8000 direct FALKI and on track 114° to TASSE and hold.</p>
--	--

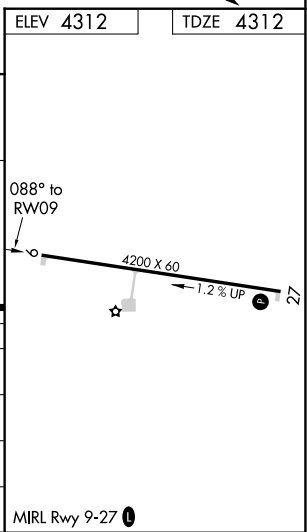
<p>LWT ASOS <b>118.375</b></p>	<p>SALT LAKE CENTER <b>127.75 351.9</b></p>	<p>CTAF <b>122.90</b></p>
------------------------------------	---	-------------------------------



ELEV 4312	TDZE 4312
-----------	-----------



CATEGORY	A	B	C	D
LPV DA	4673-1	361 (400-1)		NA
LNAV/VNAV DA	4673-1	361 (400-1)		NA
LNAV MDA	4800-1	488 (500-1)		NA
<b>C</b> CIRCLING	4940-1 628 (700-1)	5000-1 688 (700-1)		NA



NW-1, 16 JUL 2020 to 13 AUG 2020

NW-1, 16 JUL 2020 to 13 AUG 2020