

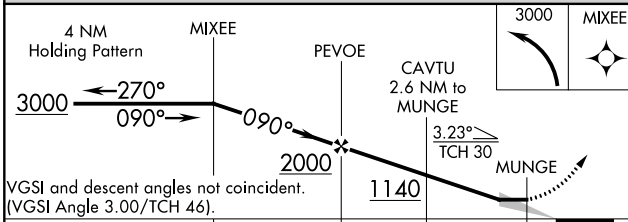
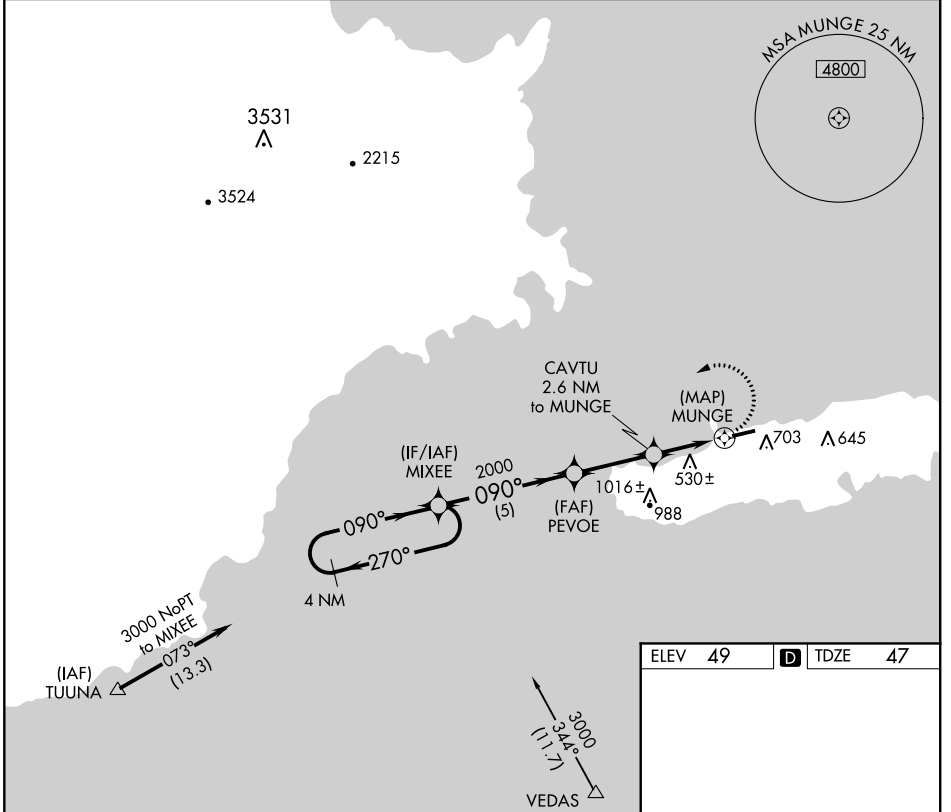
APP CRS	Rwy Idg	3405
090°	TDZE	47
	Apt Elev	49

RNAV (GPS) RWY 9

ANTONIO RIVERA RODRIGUEZ (VQS)(TJVQ)

<p>Use Luis Munoz Marin Intl altimeter setting. DME/DME RNP-0.3 NA. Circling NA south of Rwy 9-27.</p>	<p>MISSED APPROACH: Climbing left turn to 3000 direct MIXEE and hold.</p>
--	---

<p>SAN JUAN CERAP APP CON</p> <p>128.65 279.6</p>	<p>UNICOM</p> <p>123.0 (CTAF)</p>
--	--



VGSI and descent angles not coincident.
(VGSI Angle 3.00/TCH 46).

CATEGORY	A	B	C	D
LNVA MDA	880-1 833 (900-1)	880-1¼ 833 (900-1¼)		NA
CIRCLING	1140-1¼ 1091 (1100-1¼)	1140-1½ 1091 (1100-1½)		NA

ELEV 49	D TDZE 47
---------	------------------

MIRL Rwy 9-27

SE-3, 16 JUL 2020 to 13 AUG 2020

SE-3, 16 JUL 2020 to 13 AUG 2020

RNAV (GPS) RWY 9