

WAAS CH 42732 W18A	APP CRS 178°	Rwy Idg TDZE Apt Elev	7300 5944 5958
---------------------------------	------------------------	-----------------------------	---

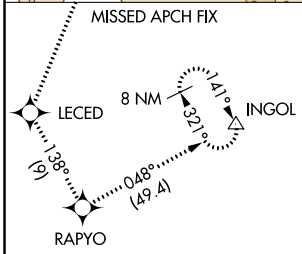
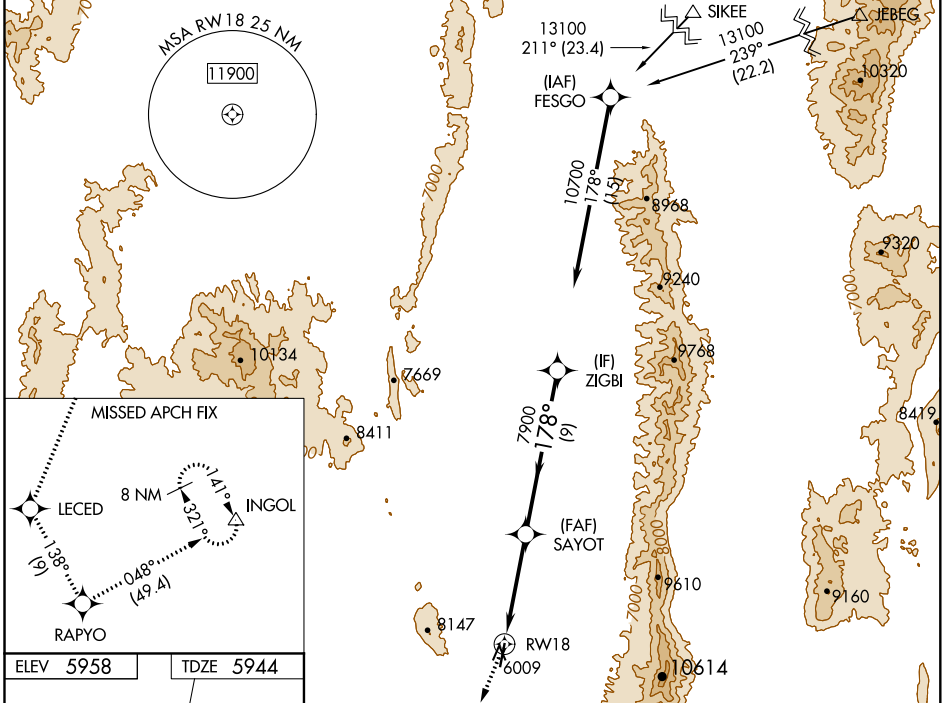
RNAV (GPS) RWY 18

EUREKA (05U)

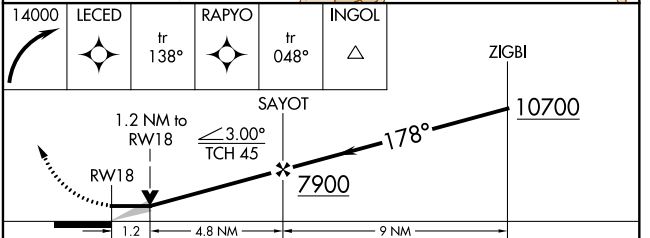
When local altimeter setting not received, procedure NA.
 DME/DME RNP-0.3 NA. Circling NA for Cat D west of Rwy 18-36.
 -17°C *Missed approach requires minimum climb of 390 feet per NM to 9200.

MISSED APPROACH: Climbing right turn to 14000 direct LECED and on track 138° to RPYO and on track 048° to INGOL and hold.

AWOS-3 128.325	SALT LAKE CENTER 132.25 338.35	CTAF 122.9
--------------------------	--	----------------------



ELEV 5958	TDZE 5944
-----------	-----------



CATEGORY	A	B	C	D
LP MDA*	6360-1	416 (500-1)	6360-1½	416 (500-1½)
LP MDA	7660-1¼ 1716 (1800-1¼)	7660-1½ 1716 (1800-1½)	7660-3	1716 (1800-3)
LNAV MDA*	6380-1	436 (500-1)	6380-1¼	436 (500-1¼)
LNAV MDA	7820-1¼ 1876 (1900-1¼)	7820-1½ 1876 (1900-1½)	7820-3	1876 (1900-3)
C CIRCLING	7820-1¼ 1862 (1900-1¼)	7820-1½ 1862 (1900-1½)	7820-3	1862 (1900-3)

HIRL Rwy 18-36
 REIL Rws 18 and 36

SW-4, 16 JUL 2020 to 13 AUG 2020

SW-4, 16 JUL 2020 to 13 AUG 2020