

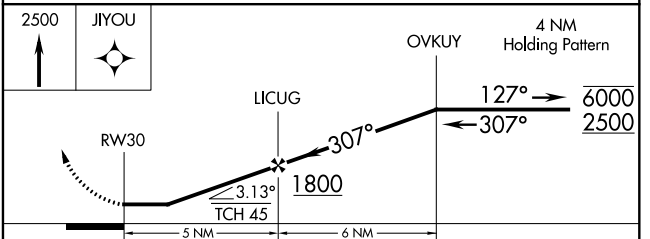
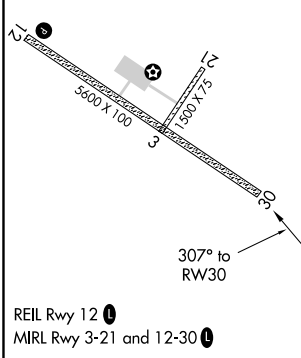
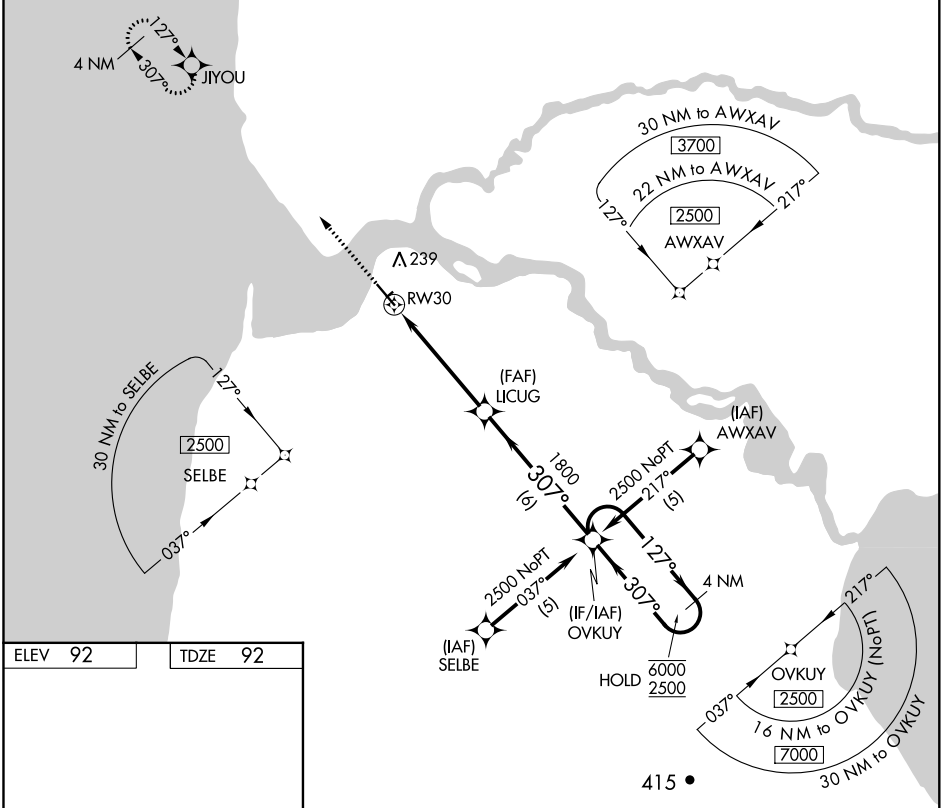
APP CRS	Rwy Idg	5600
307°	TDZE	92
	Apt Elev	92

RNAV (GPS) RWY 30

EGEGIK (EII) (PAII)

RNP APCH.	MISSED APPROACH: Climb to 2500 direct JIYOU and hold.
▼ Rwy 30 helicopter visibility reduction below 1 SM NA.	

AWOS-3P 135.65	ANCHORAGE CENTER 124.8 354.0	CTAF 122.8
--------------------------	--	----------------------



CATEGORY	A	B	C	D
LNAV MDA	700-1	608 (700-1)	700-1 ³ / ₄ 608 (700-1 ³ / ₄)	NA
CIRCLING	800-1	708 (800-1)	800-2 ¹ / ₄ 708 (800-2 ¹ / ₄)	NA

AK, 16 JUL 2020 to 10 SEP 2020

AK, 16 JUL 2020 to 10 SEP 2020