

# RNAV (GPS) RWY 12

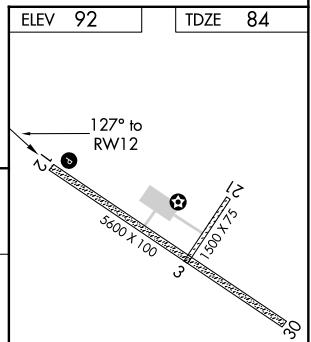
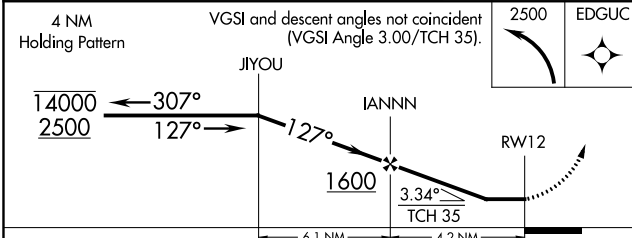
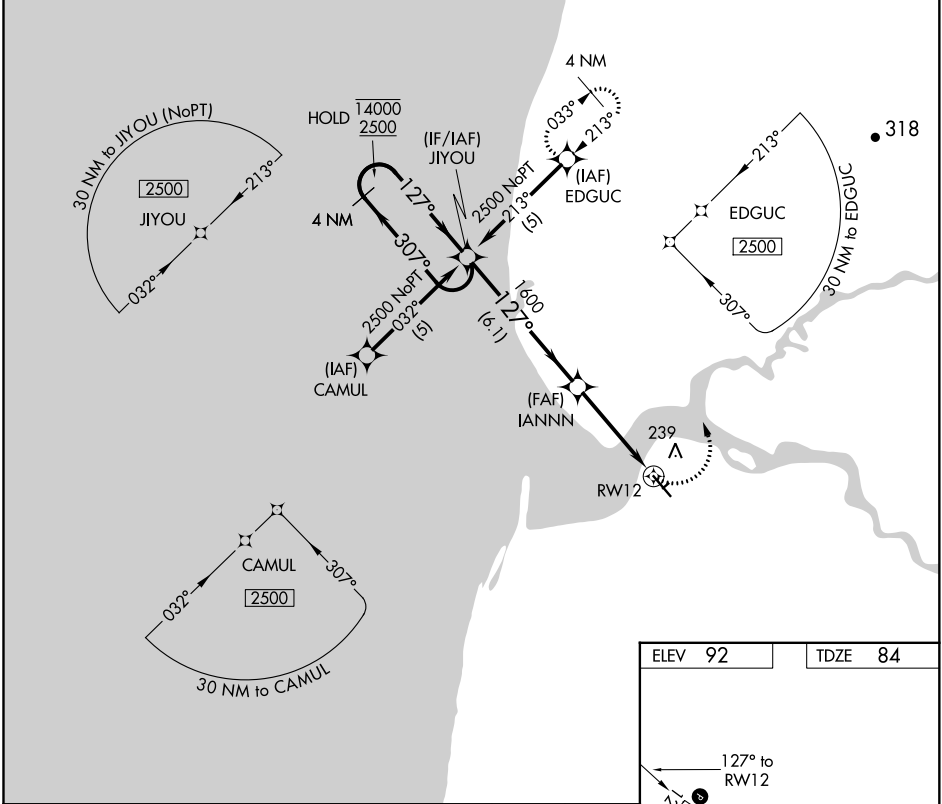
EGEGIK (EII) (PAII)

APP CRS <b>127°</b>	Rwy Idg <b>5600</b>
	TDZE <b>84</b>
	Apt Elev <b>92</b>

RNP APCH.  
 ▼ Rwy 12 helicopter visibility reduction below 1 SM NA.

MISSED APPROACH: Climbing left turn to 2500 direct EDGUC and hold.

AWOS-3P <b>135.65</b>	ANCHORAGE CENTER <b>124.8 354.0</b>	CTAF <b>122.8 0</b>
--------------------------	--	------------------------



CATEGORY	A	B	C	D
LNVA MDA	600-1	516 (600-1)	600-1 <sup>3</sup> / <sub>4</sub> 516 (600-1 <sup>3</sup> / <sub>4</sub> )	NA
CIRCLING	800-1	708 (800-1)	800-2 <sup>1</sup> / <sub>4</sub> 708 (800-2 <sup>1</sup> / <sub>4</sub> )	NA

REIL Rwy 12 0  
 MIRL Rwy 3-21 and 12-30 0

AK, 16 JUL 2020 to 10 SEP 2020

AK, 16 JUL 2020 to 10 SEP 2020