

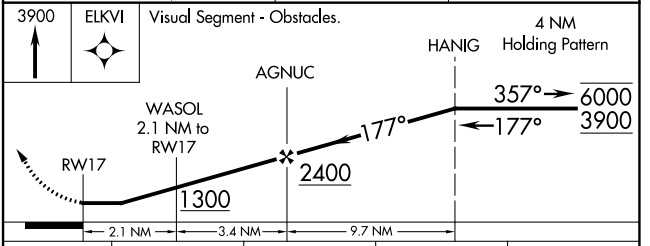
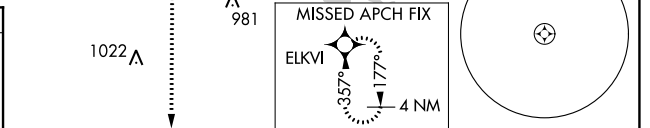
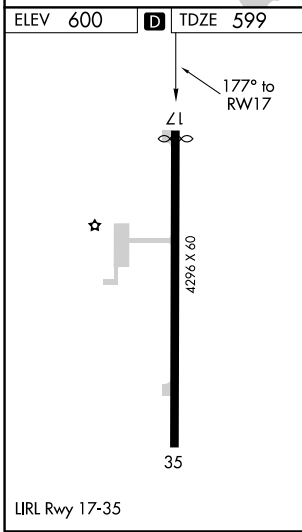
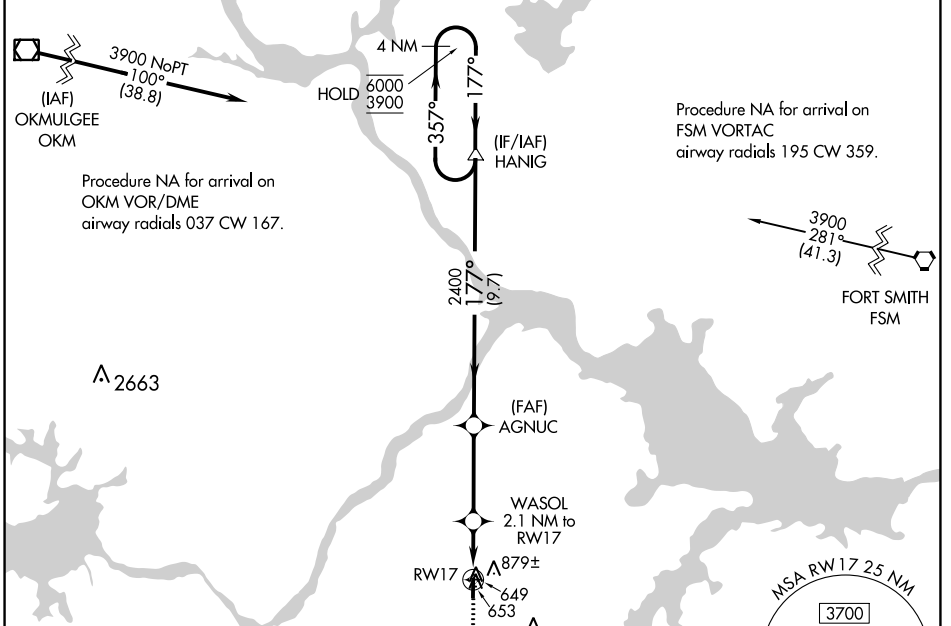
WAAS CH <b>65822</b> <b>W17A</b>	APP CRS <b>177°</b>	Rwy Idg TDZE Apt Elev	<b>4200</b> <b>599</b> <b>600</b>
--	------------------------	-----------------------------	---

# RNAV (GPS) RWY 17

STIGLER RGNL (GZL)

RNP APCH. ▼ Rwy 17 helicopter visibility reduction below 1 SM NA. Procedure NA at night.	MISSED APPROACH: Climb to 3900 direct ELKVI and hold, continue climb-in-hold to 3900.
--	--

AWOS-3 <b>118.575</b>	FORT WORTH CENTER <b>132.2 338.35</b>	CTAF <b>122.9</b>
--------------------------	--	----------------------



CATEGORY	A	B	C	D
LP MDA	900-1	301 (300-1)		NA
LNAV MDA	1020-1	421 (500-1)		NA
<b>C</b> CIRCLING	1180-1	580 (600-1)		NA

SC-1, 16 JUL 2020 to 13 AUG 2020

SC-1, 16 JUL 2020 to 13 AUG 2020