

APP CRS 285°	Rwy Idg TDZE Apt Elev	N/A N/A 155
------------------------	-----------------------------	--

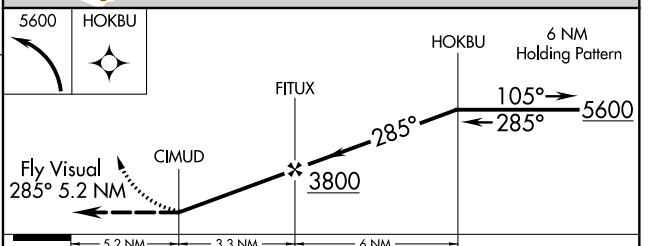
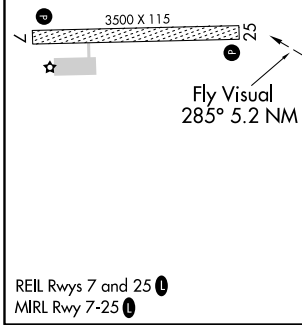
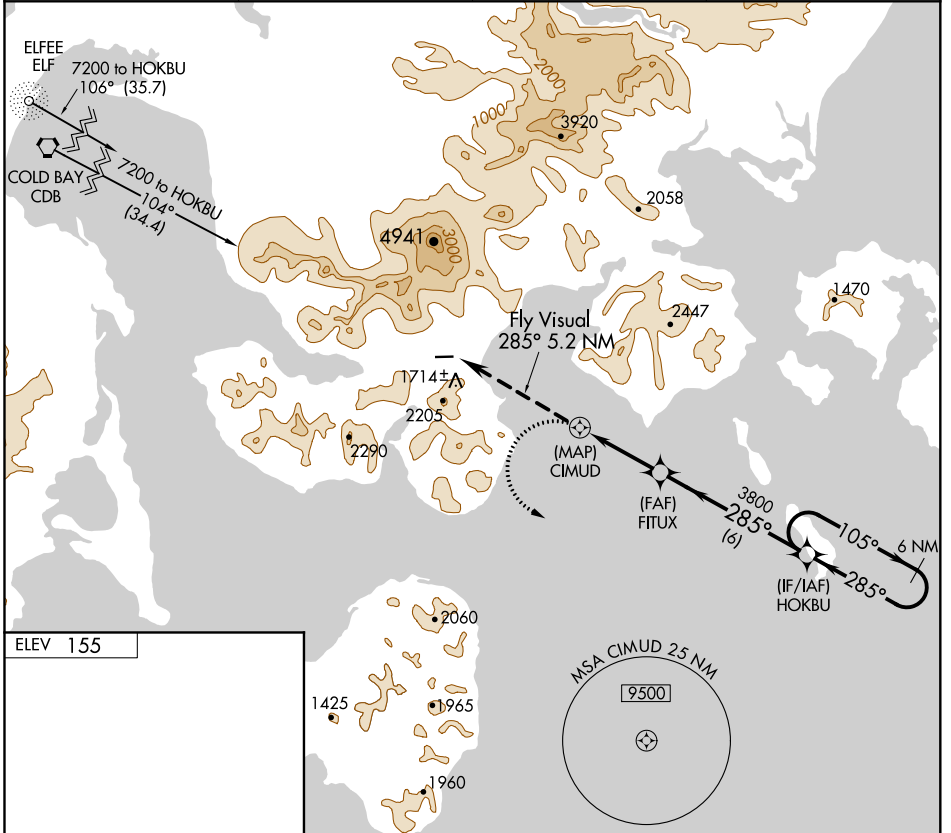
RNAV (GPS)-A

KING COVE (KVC)(PAVC)

⚠ Circling NA north of Rwy 7-25. Procedure NA at night. DME/DME RNP-0.3 NA. If local altimeter setting not received, use Cold Bay altimeter setting.

⚠ MISSED APPROACH: Climbing left turn to 5600 direct HOKBU and hold, continue climb in hold to 5600.

AWOS-3P 118.325	CDB/PACD ASOS 135.75	ANCHORAGE CENTER 118.5 278.3	CTAF 122.9
---------------------------	--------------------------------	--	----------------------



CATEGORY	A	B	C	D
CIRCLING	2080-6 1925 (2000-6)	2180-6 2025 (2100-6)	NA	

AK, 16 JUL 2020 to 10 SEP 2020

AK, 16 JUL 2020 to 10 SEP 2020