

VORTAC ONL <b>113.9</b> Chan <b>86</b>	APP CRS <b>279°</b>	Rwy Idg TDZE Apt Elev	<b>3900</b> <b>2130</b> <b>2131</b>
--	------------------------	-----------------------------	---

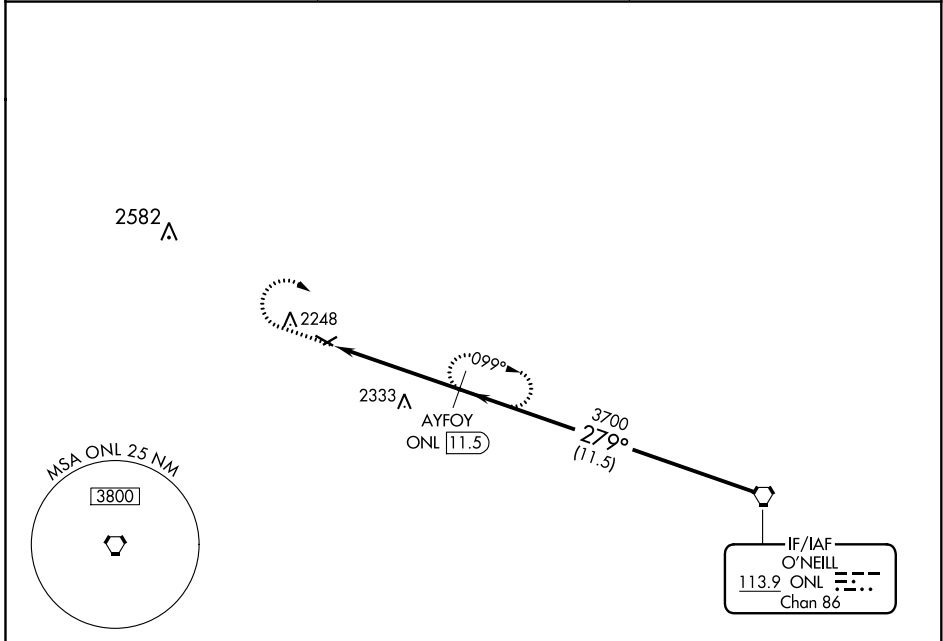
# VOR/DME RWY 29

STUART-ATKINSON MUNI (8V2)

**NA** Use O'Neill altimeter setting; when not received, use Ainsworth altimeter setting and increase all MDA 120 feet.

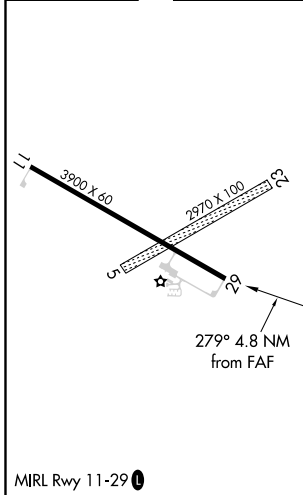
MISSED APPROACH: Climb to 3700 then right turn on ONL VORTAC R-279 to AYFOY/ONL 11.5 DME and hold.

ONL AWOS-3 <b>121.125</b>	MINNEAPOLIS CENTER <b>128.0 257.95</b>	CTAF <b>122.9</b>
------------------------------	---	----------------------



ELEV 2131	TDZE 2130
-----------	-----------

Procedure NA for arrival on ONL VORTAC airway radials 266 CW 313.



3700	AYFOY ONL 11.5	AYFOY ONL 11.5	ONL VORTAC	
ONL 16.3	3700	3700	3700	
4.8 NM	11.5 NM			
CATEGORY	A	B	C	D
S-29	2640-1	510 (600-1)		NA
CIRCLING	2640-1	509 (600-1)		NA