

WAAS CH 53627 W29A	APP CRS 294°	Rwy Idg TDZE 2130 Apt Elev 2131	3900
--	------------------------	---	-------------

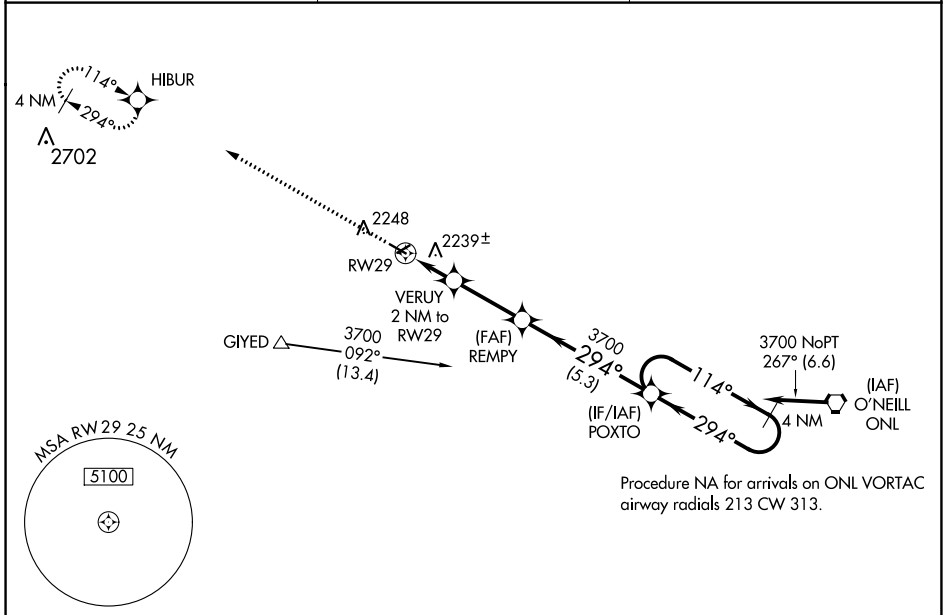
RNAV (GPS) RWY 29

STUART-ATKINSON MUNI (8V2)

NA Baro-VNAV NA. Use O'Neill altimeter setting; when not received, use Ainsworth altimeter setting and increase all DA 110 feet and all MDA 120 feet. Increase LPV and LNAV/VNAV all Cats visibility $\frac{3}{8}$ mile. DME/DME RNP-0.3 NA.

MISSED APPROACH: Climb to 3900 direct HIBUR and hold.

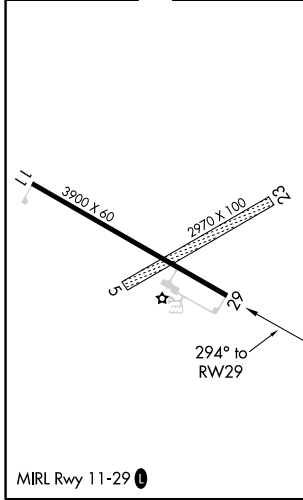
ONL AWOS-3 121.125	MINNEAPOLIS CENTER 128.0 257.95	CTAF 122.90
------------------------------	---	-----------------------



NC-2, 16 JUL 2020 to 13 AUG 2020

NC-2, 16 JUL 2020 to 13 AUG 2020

ELEV 2131	TDZE 2130
-----------	-----------



	3900	HIBUR			
			REMPY	POXTO	4 NM Holding Pattern
*LNAV only		VERUY 2 NM to RW29	3700	3700	3700
		2800*	294°	114°	294°
		2 NM	2.8 NM	5.3 NM	4 NM
					GP 3.00° TCH 40
CATEGORY	A	B	C	D	
LPV DA	2432-1	302 (400-1)			NA
LNAV/VNAV DA	2457-1 $\frac{1}{8}$	327 (400-1 $\frac{1}{8}$)			NA
LNAV MDA	2560-1	430 (500-1)			NA
CIRCLING	2620-1 489 (500-1)	2640-1 509 (600-1)			NA