

WAAS CH 40136 W15A	APP CRS 182°	Rwy Idg 2775 TDZE 147 Apt Elev 147
--	------------------------	---

RNAV (GPS) RWY 15

KINGSTON-ULSTER (20N)

▼ DME/DME RNP-0.3 NA. Helicopter visibility reduction below 1 SM NA.
▲ NA Use Hudson altimeter setting. When not received, use Newburgh altimeter setting and increase all MDA 60 feet. Night landing: Rwy 15 NA.

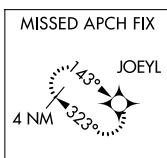
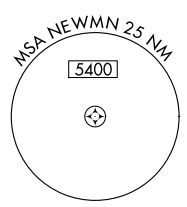
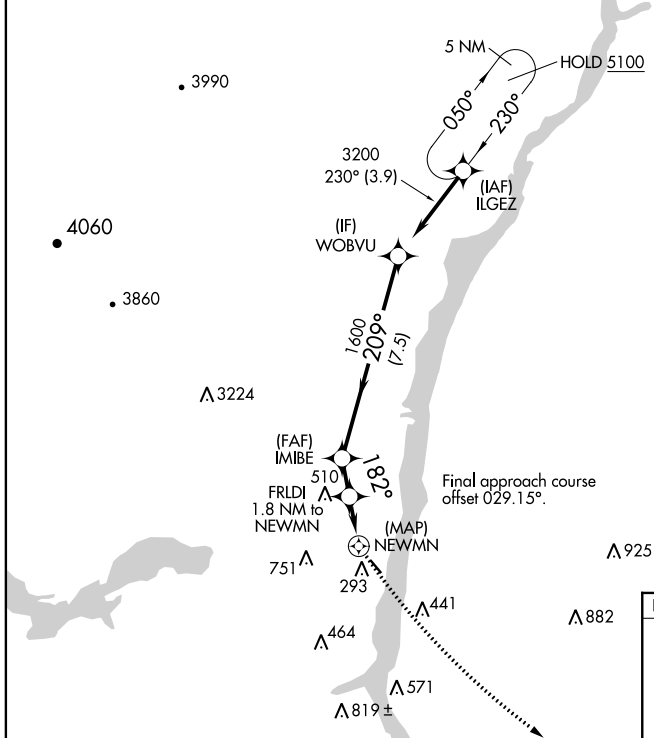
MISSED APPROACH: Climbing left turn to 3000 direct JOEYL and hold.

NEW YORK APP CON
132.75 363.1

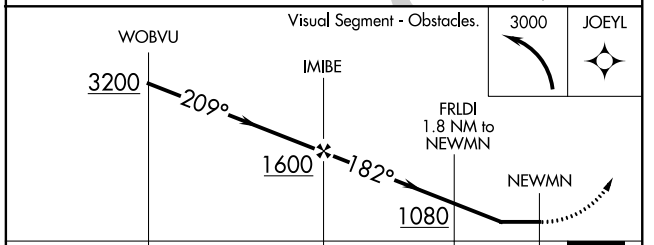
UNICOM
122.8 (CTAF)

123.3

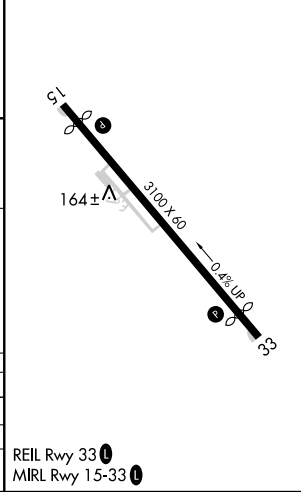
RADAR REQUIRED



ELEV 147	D TDZE 147
----------	-------------------



CATEGORY	A	B	C	D
LP MDA	720-1	573 (600-1)		NA
LNAV MDA	800-1	653 (700-1)		NA
C CIRCLING	800-1 653 (700-1)	960-1¼ 813 (900-1¼)		NA



NE-2, 16 JUL 2020 to 13 AUG 2020

NE-2, 16 JUL 2020 to 13 AUG 2020