

APP CRS 124°	Rwy Idg TDZE Apt Elev	N/A N/A 1130
------------------------	-----------------------------	---

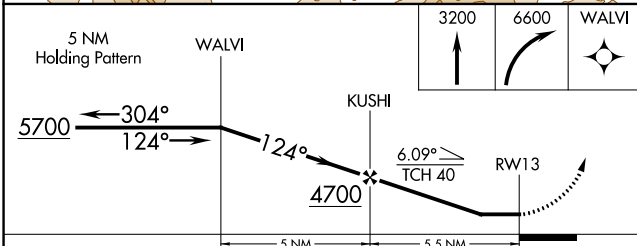
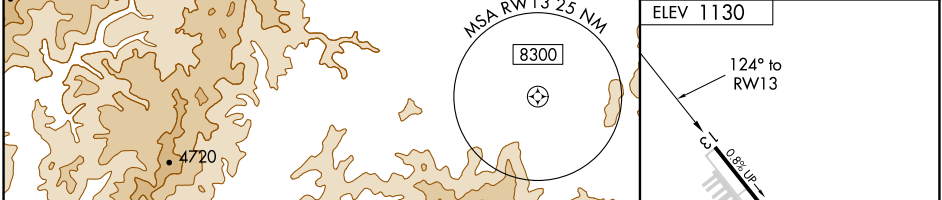
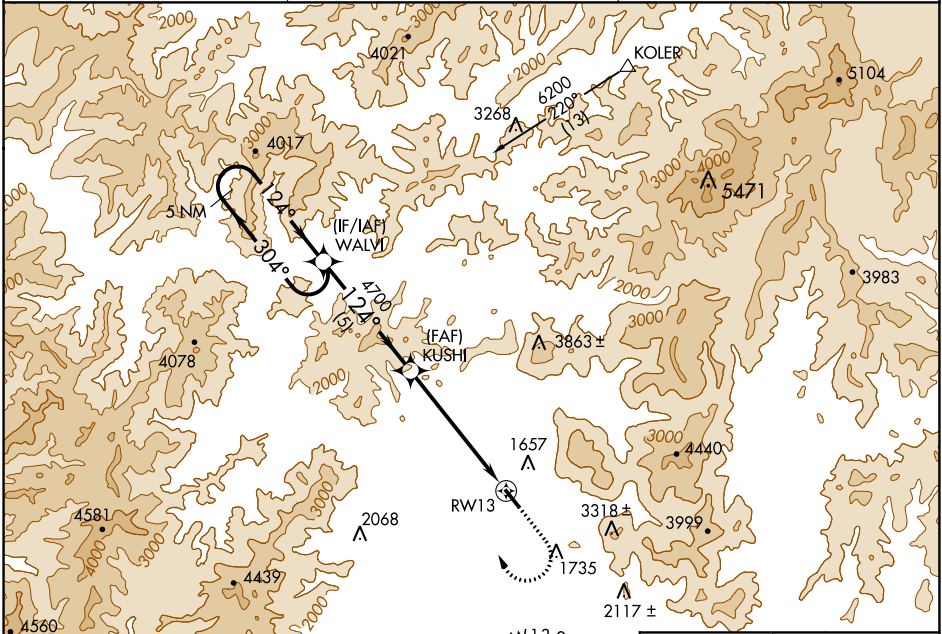
RNAV (GPS)-A

GRANTS PASS (3S8)

NA Circling NA northeast of Rwy 13-31. DME/DME RNP-0.3 NA. Visibility reduction by helicopters NA.

MISSED APPROACH: Climb to 3200 then climbing right turn to 6600 direct WALVI and hold, continue climb-in-hold to 6600.

AWOS-3PT 120.0	CASCADE APP CON * 124.3 379.9	UNICOM 122.8 (CTAF)
--------------------------	---	-------------------------------



CATEGORY	A	B	C	D
CIRCLING	2920-1¼ 1790 (1800-1¼)	2920-1½ 1790 (1800-1½)		NA

ELEV 1130

124° to RW13

REIL Rwy 13 and 31 **0**
MIRL Rwy 13-31 **0**

NW-1, 16 JUL 2020 to 13 AUG 2020

NW-1, 16 JUL 2020 to 13 AUG 2020