

APP CRS	Rwy ldg	2697
320°	TDZE	762
	Apt Elev	773

RNAV (GPS) RWY 32

EPHRAIM-GIBRALTAR (3D2)

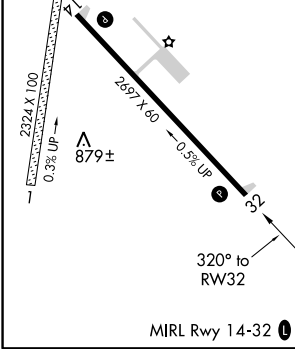
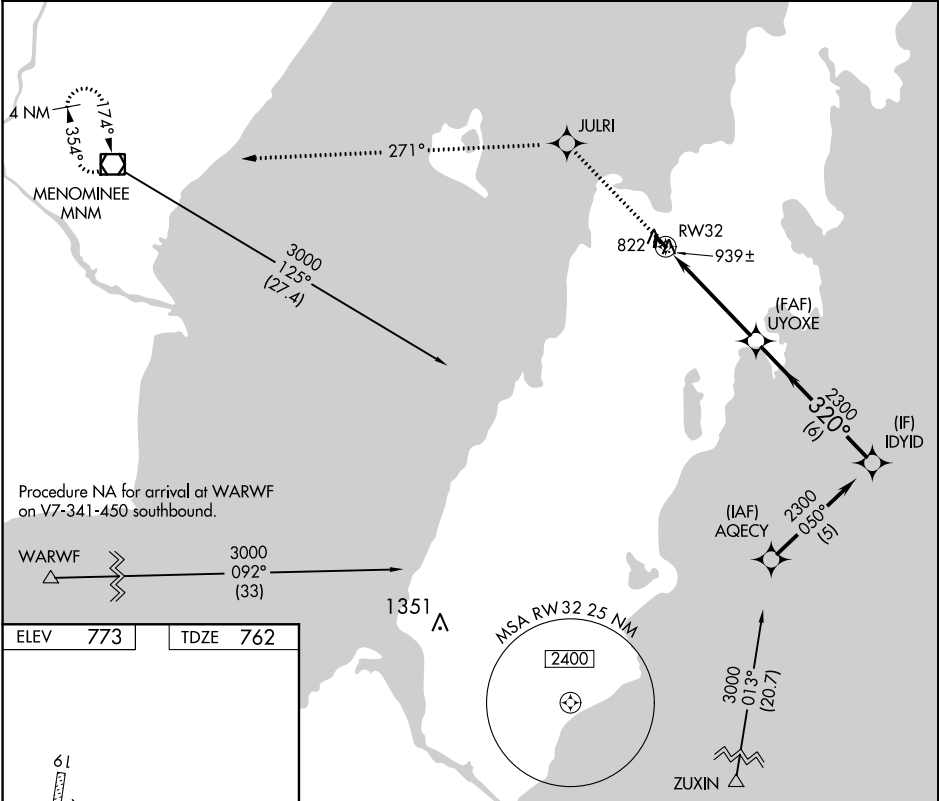
RNP APCH.

▼ Rwy 32 helicopter visibility reduction below 3/4 SM NA. Use Door County Cherryland altimeter setting; when not received, use Menominee altimeter setting and increase all MDA 20 feet.

▲ NA

MISSED APPROACH: Climb to 3000 direct JULRI and on track 271° to MNM VOR/DME and hold.

AWOS-3PT 124.175	GREEN BAY APP CON★ 120.3 338.2	UNICOM 123.0 (CTAF) 0
----------------------------	--	---------------------------------



3000	JULRI	tr 271°	MNM	VGSI and descent angles not coincident (VGSI Angle 3.00/TCH 25).	Procedure Turn NA
↑	✧		◻		
UYOXE		IDYID			
RW32		320°		2300	
4.7 NM		6 NM			
CATEGORY	A	B	C	D	
LNAV MDA	1260-1	498 (500-1)	1260-1 1/4 498 (500-1 1/4)	NA	

MIRL Rwy 14-32

EC-3, 16 JUL 2020 to 13 AUG 2020

EC-3, 16 JUL 2020 to 13 AUG 2020