

APP CRS	Rwy Idg	2697
140°	TDZE	762
	Apt Elev	773

RNAV (GPS) RWY 14

EPHRAIM-GIBRALTAR (3D2)

RNP APCH:

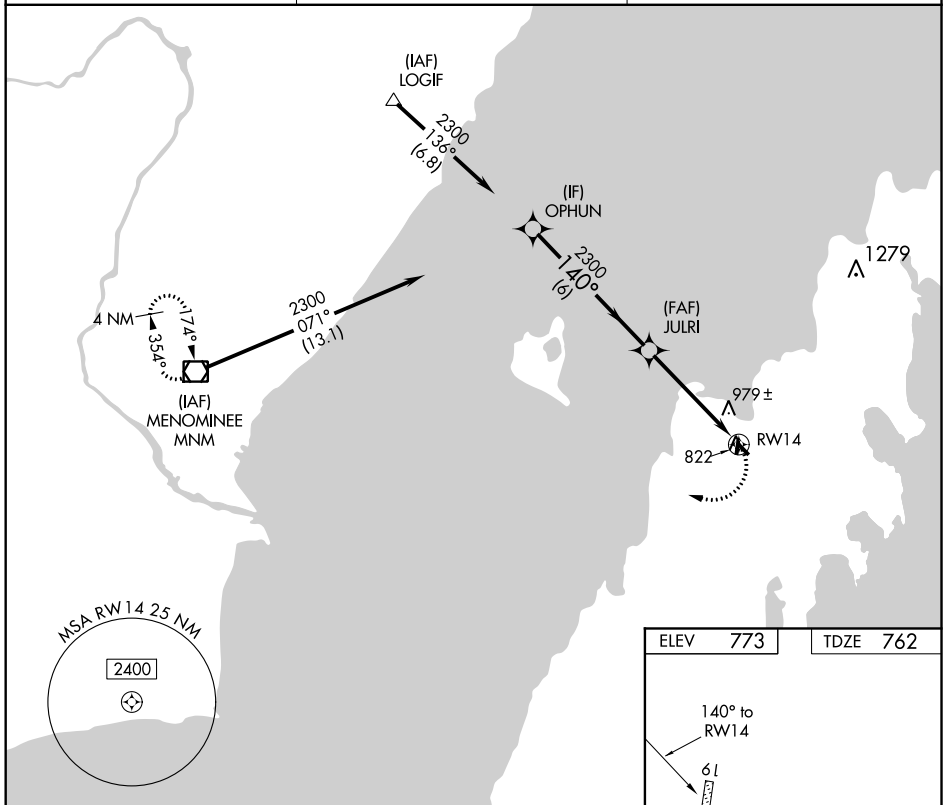
- Rwy 14 helicopter visibility reduction below 3/4 SM NA. Use Door County Cherryland altimeter setting; when not received, use Menominee altimeter setting and increase all MDA 20 feet.
- NA

MISSED APPROACH: Climbing right turn to 3000 direct MNM VOR/DME and hold.

AWOS-3PT
124.175

GREEN BAY APP CON★
120.3 338.2

UNICOM
123.0 (CTAF) 0



EC-3, 16 JUL 2020 to 13 AUG 2020

EC-3, 16 JUL 2020 to 13 AUG 2020

