

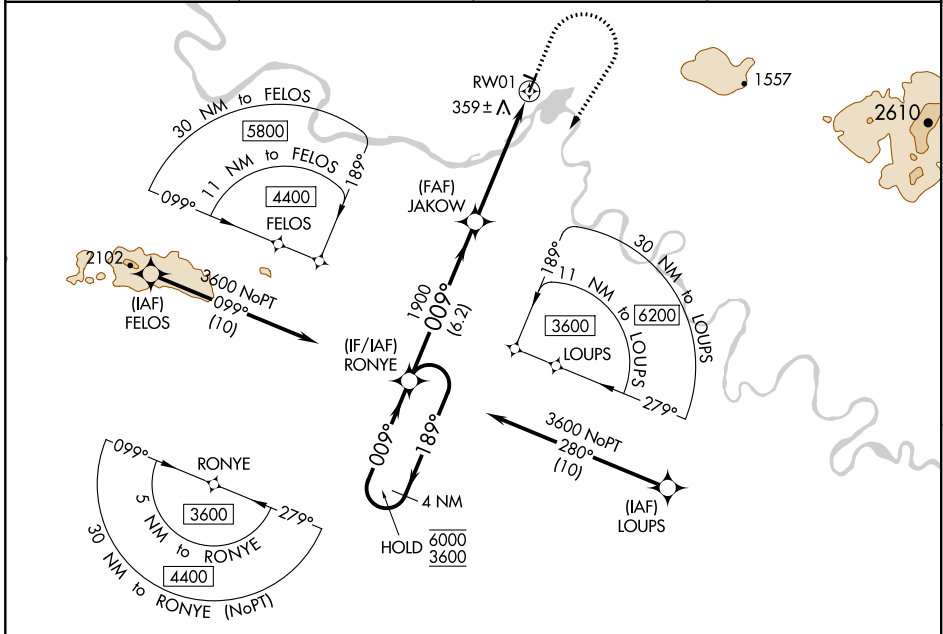
WAAS CH 40439 W01A	APP CRS 009°	Rwy Idg TDZE Apt Elev	4000 268 293
---------------------------------	------------------------	-----------------------------	---

RNAV (GPS) RWY 1

AMBLER (AFM) (PAFM)

RNP APCH.	MISSED APPROACH: Climb to 1000 then climbing right turn to 3600 direct RONYE and hold, continue climb-in-hold to 3600. # Missed approach requires minimum climb of 210 feet per NM to 2300.
<p>Circling NA west of Rwy 1-19. For uncompensated Baro-VNAV systems, LNAV/VNAV NA below -20°C or above 42°C. -35°C</p>	

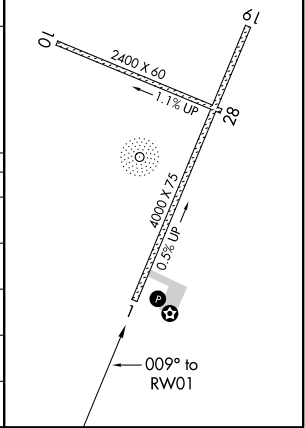
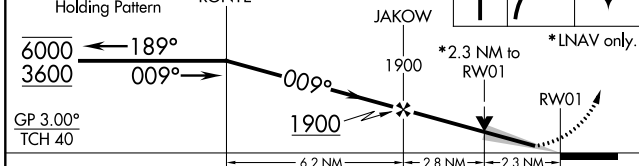
AWOS-3P 132.1	ANCHORAGE CENTER 119.2 263.0	KOTZEBUE RADIO 122.0	CTAF 122.7
-------------------------	--	--------------------------------	----------------------



AK, 16 JUL 2020 to 10 SEP 2020

AK, 16 JUL 2020 to 10 SEP 2020

VGSI and RNAV glidepath not coincident (VGSI Angle 3.00/TCH 25).	1000	3600	RONYE	ELEV 293	TDZE 268
4 NM Holding Pattern	↑	↷	✦	MIRL Rwy 1-19 and 10-28	



CATEGORY	A	B	C	D
LPV DA#		518-1	250 (300-1)	
LPV DA		686-1 ³ / ₈	418 (400-1 ³ / ₈)	
LNAV/VNAV DA		811-1 ⁷ / ₈	543 (600-1 ⁷ / ₈)	
LNAV MDA	1000-1 732 (800-1)	1000-1 ¹ / ₄ 732 (800-1 ¹ / ₄)	1000-1 ⁷ / ₈ 732 (800-1 ⁷ / ₈)	732 (800-1 ⁷ / ₈)
CIRCLING	1000-1 707 (800-1)	1000-1 ¹ / ₄ 707 (800-1 ¹ / ₄)	1000-2 707 (800-2)	1000-2 ¹ / ₄ 707 (800-2 ¹ / ₄)