

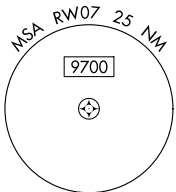
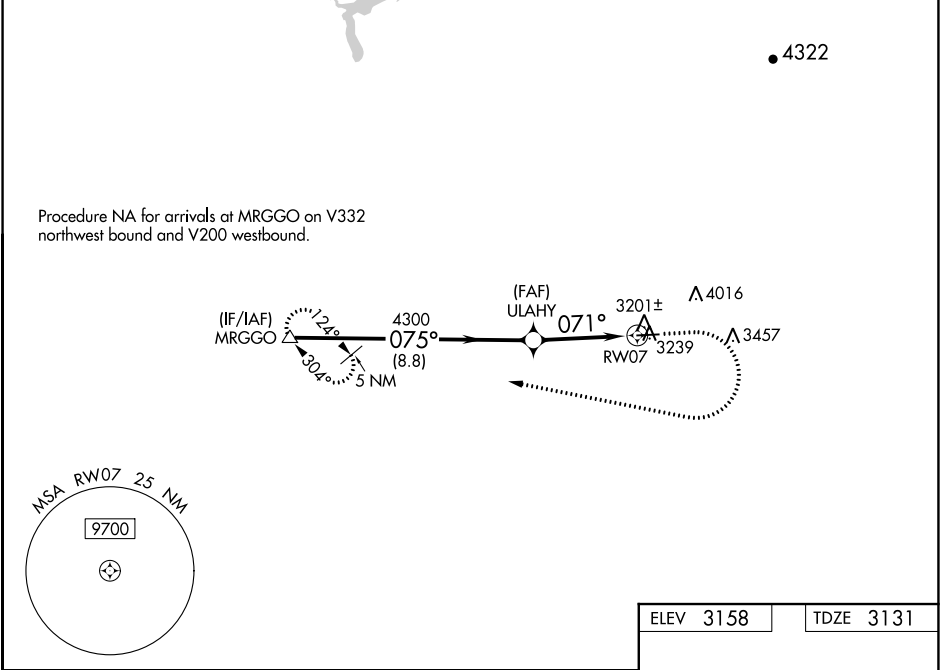
WAAS CH 90240 W07A	APP CRS 071°	Rwy Idg TDZE Apt Elev	4657 3131 3158
--	------------------------	-----------------------------	---

RNAV (GPS) RWY 7

NEVADA COUNTY (GOO)

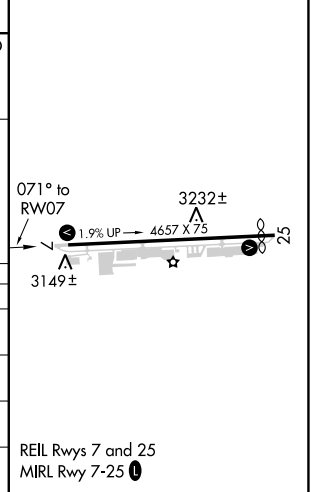
RNP APCH.	MISSED APPROACH: (Do not exceed 250K until MRGGO) Climb to 3900 then climbing right turn to 6000 direct MRGGO and hold.
<p>▼ ▲</p> <p>Circling NA north of Rwy 7-25. Rwy 7 helicopter visibility reduction below 1 SM NA. For uncompensated Baro-VNAV systems, LNAV/VNAV NA below -21°C or above 54°C. Procedure NA at night.</p>	

AWOS-3 121.325	NORCAL APP CON 125.4 259.1	UNICOM 122.725 (CTAF) 0
--------------------------	--------------------------------------	-----------------------------------



ELEV 3158	TDZE 3131
-----------	-----------

MRGGO	5000	075°	4300	071°	RWY 7
GP 3.00° TCH 40	8.8 NM		3.7 NM		
CATEGORY	A	B	C	D	
LPV DA		3606-1 ³ / ₈	475 (500-1 ³ / ₈)		
LNAV/VNAV DA		3772-1 ⁷ / ₈	641 (700-1 ⁷ / ₈)		
LNAV MDA	3860-1	729 (800-1)	3860-2	729 (800-2)	
C CIRCLING	3860-1	702 (800-1)	3880-2 722 (800-2)	3880-2 ¹ / ₄ 722 (800-2 ¹ / ₄)	



SW-2, 16 JUL 2020 to 13 AUG 2020

SW-2, 16 JUL 2020 to 13 AUG 2020