

WAAS CH <b>77741</b> <b>W17A</b>	APP CRS <b>175°</b>	Rwy Idg TDZE Apt Elev	<b>4020</b> <b>1468</b> <b>1468</b>
----------------------------------------	------------------------	-----------------------------	-------------------------------------------

# RNAV (GPS) RWY 17

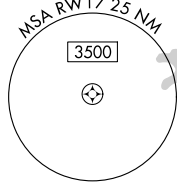
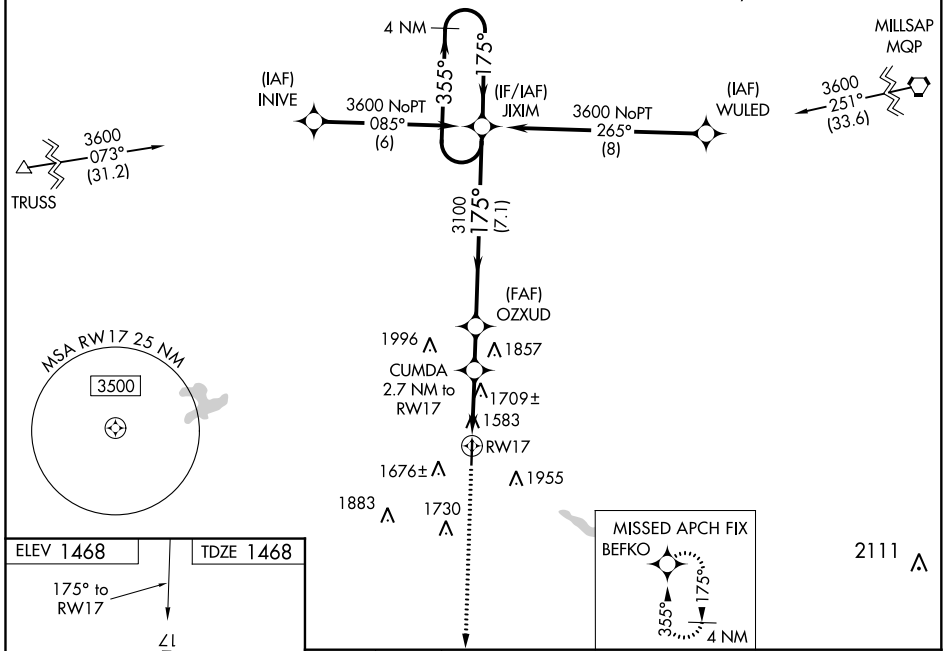
EASTLAND MUNI (ETN)

**⚠** Helicopter visibility reduction below 1 SM NA. DME/DME RNP-0.3 NA. When local altimeter setting not received, use Breckenridge altimeter setting. Straight-in Rwy 17 NA at night, Circling Rwy 17 NA at night.

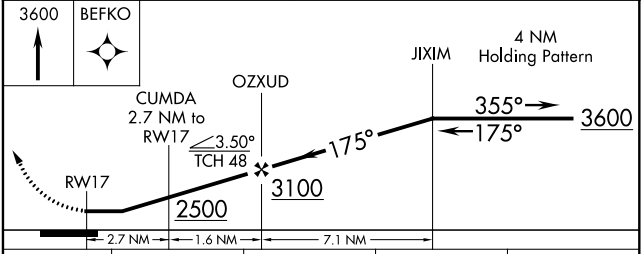
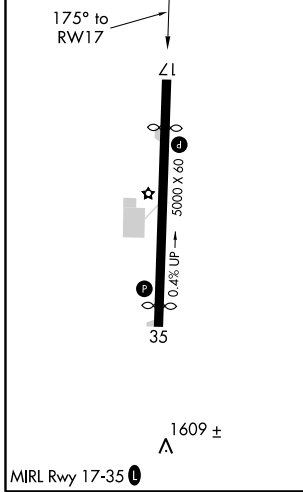
**⚠** MISSED APPROACH: Climb to 3600 direct BEFKO and hold.

AWOS-3PT <b>118.45</b>	FORT WORTH CENTER <b>127.15 314.05</b>	UNICOM <b>122.8 (CTAF) 0</b>
---------------------------	-------------------------------------------	---------------------------------

Procedure NA for arrival on MQP VORTAC  
airway radials 161 CW 330.



ELEV 1468	TDZE 1468
-----------	-----------



CATEGORY	A	B	C	D
LP MDA	2040-1	572 (600-1)	2040-1 5/8 572 (600-1 5/8)	NA
LNAV MDA	2040-1	572 (600-1)	2040-1 5/8 572 (600-1 5/8)	NA
CIRCLING	2120-1	652 (700-1)	2300-2 1/2 832 (900-2 1/2)	NA

SC-2, 16 JUL 2020 to 13 AUG 2020

SC-2, 16 JUL 2020 to 13 AUG 2020