

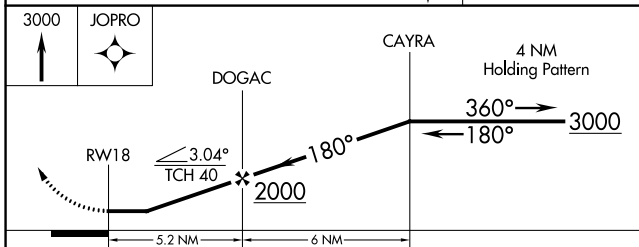
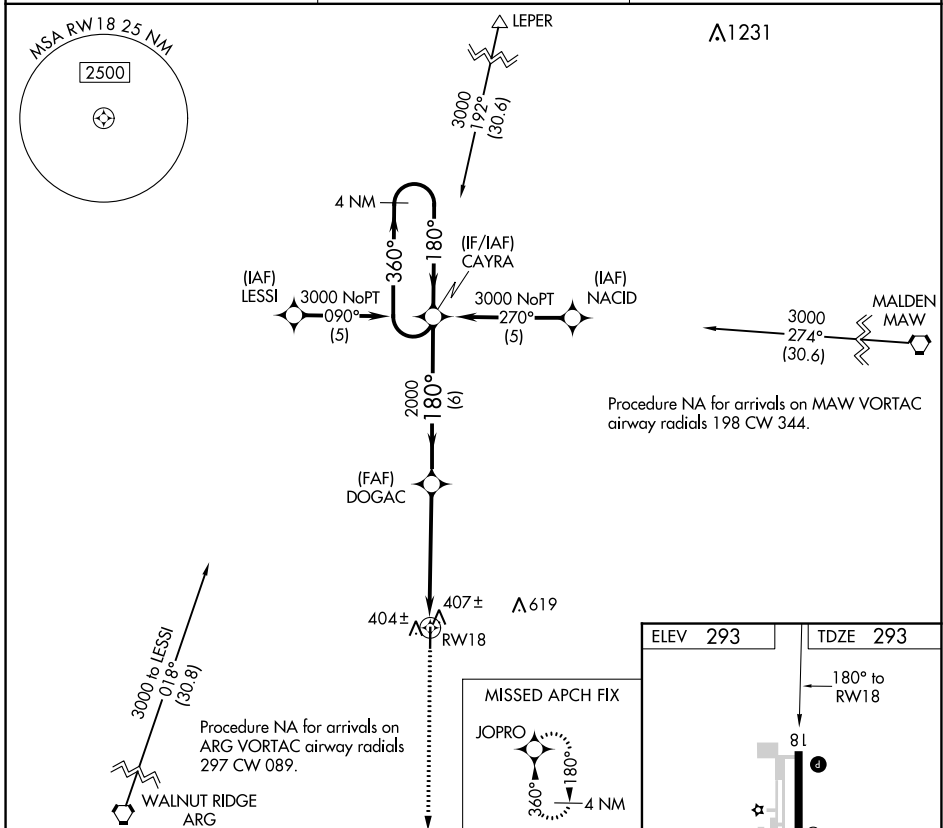
APP CRS	Rwy Idg	4299
180°	TDZE	293
	Apt Elev	293

RNAV (GPS) RWY 18

CORNING MUNI (4M9)

RNP APCH.	<p>▼ When local altimeter setting not received, use Walnut Ridge altimeter setting and increase all MDA 60 feet. Increase LNAV Cat C visibility 1/8 SM. Rwy 18 helicopter visibility reduction below 1 SM NA.</p>	<p>MISSED APPROACH: Climb to 3000 direct JOPRO and hold.</p>
-----------	---	--

AWOS-3 118.325	MEMPHIS CENTER 120.075 289.4	UNICOM 123.0 (CTAF) ①
--------------------------	--	---------------------------------



ELEV 293	TDZE 293
----------	----------

REIL Rwys 18 and 36 ①
MIRL Rwy 18-36 ①

SC-1, 16 JUL 2020 to 13 AUG 2020

SC-1, 16 JUL 2020 to 13 AUG 2020