

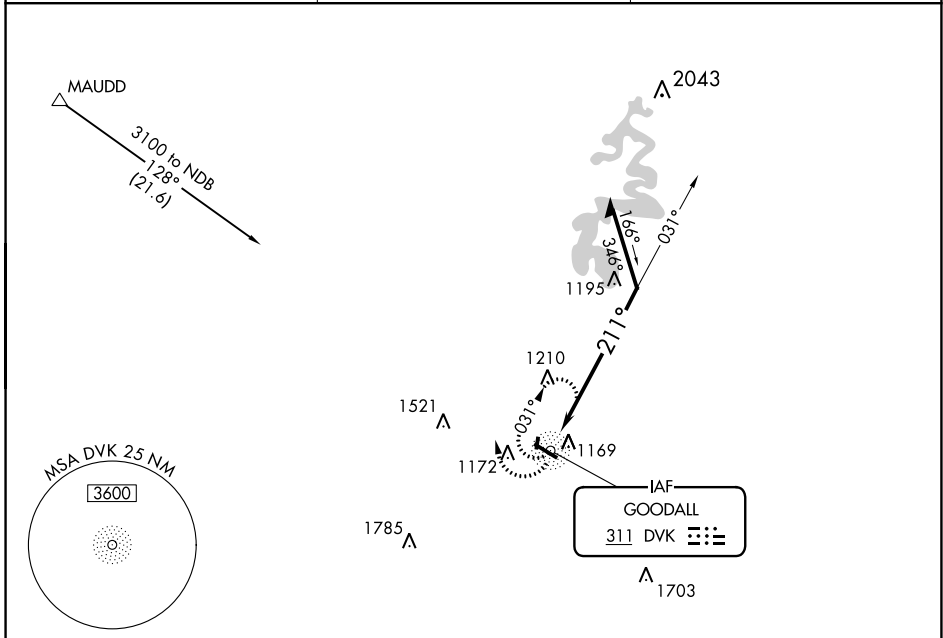
NDB DVK <b>311</b>	APP CRS <b>211°</b>	Rwy Idg TDZE Apt Elev <b>1022</b>	<b>N/A</b> <b>N/A</b>
-----------------------	------------------------	--	--------------------------

**NDB-A**  
STUART POWELL FIELD (DVK)

**⚠** When local altimeter setting not received, use Lexington altimeter setting and increase all MDAs 80 feet and visibility Cats C and D ¼ mile. Rwy 1, 19 helicopter visibility reduction below 1 SM NA. Circling Rwy 1, 19 NA at night.

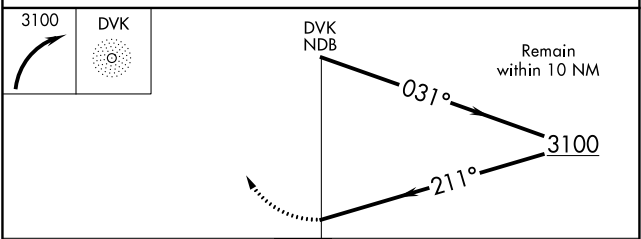
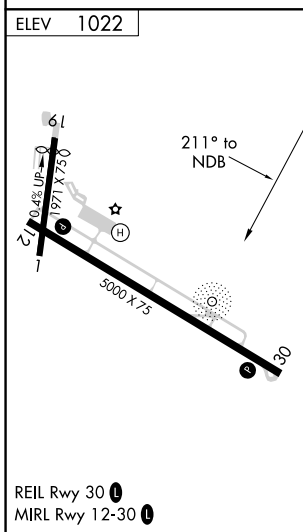
**MISSED APPROACH:** Climbing right turn to 3100 in DVK NDB holding pattern.

AWOS-3 <b>128.325</b>	LEXINGTON APP CON <b>120.15 259.3</b>	UNICOM <b>122.8 (CTAF) 0</b>
--------------------------	--	---------------------------------



SE-1, 16 JUL 2020 to 13 AUG 2020

SE-1, 16 JUL 2020 to 13 AUG 2020



CATEGORY	A	B	C	D
CIRCLING	1600-1	578 (600-1)	1600-1½ 578 (600-1½)	1720-2¼ 698 (700-2¼)