

LOM MW <b>223</b>	APP CRS <b>158°</b>	Rwy ldg TDZE Apt Elev	<b>N/A</b> <b>N/A</b> <b>898</b>
----------------------	------------------------	-----------------------------	--

**NDB-A**

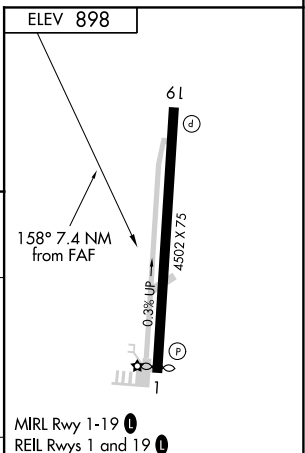
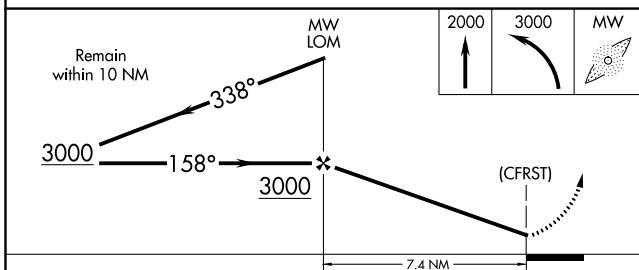
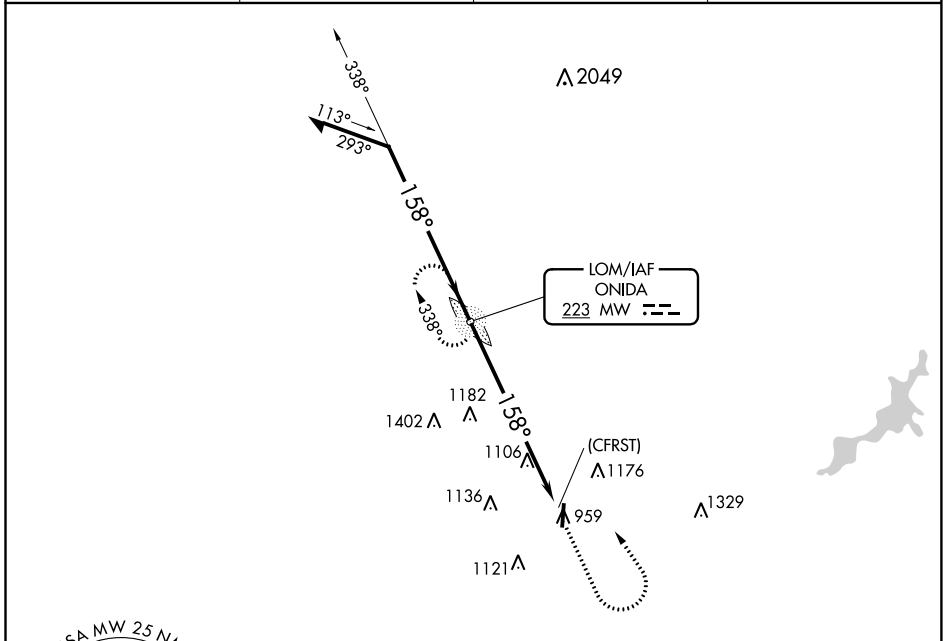
WARREN COUNTY/JOHN LANE FIELD (I68)

RADAR required for procedure entry.

When Circling to Rwy 19 at night, operational VGSI required, remain on or above VGSI glidepath until threshold.

MISSED APPROACH: Climb to 2000 then climbing left turn to 3000 direct MW LOM and hold.

AWOS-3 <b>120.55</b>	COLUMBUS APP CON <b>118.85 269.275</b>	CLNC DEL <b>119.4</b>	UNICOM <b>123.075 (CTAF)</b>
-------------------------	---	--------------------------	---------------------------------



CATEGORY	A		B		C		D		
	1680-1	782 (800-1)	1680-2¼	782 (800-2¼)	1680-2½	782 (800-2½)	FAF to MAP 7.4 NM		
CIRCLING	60	90	120	150	180				
	Min:Sec	7:24	4:56	3:42	2:58	2:28			

**NDB-A**

EC-2, 16 JUL 2020 to 13 AUG 2020

EC-2, 16 JUL 2020 to 13 AUG 2020