

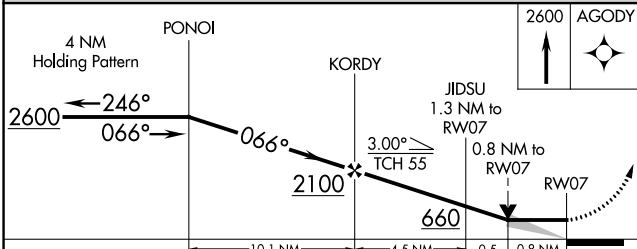
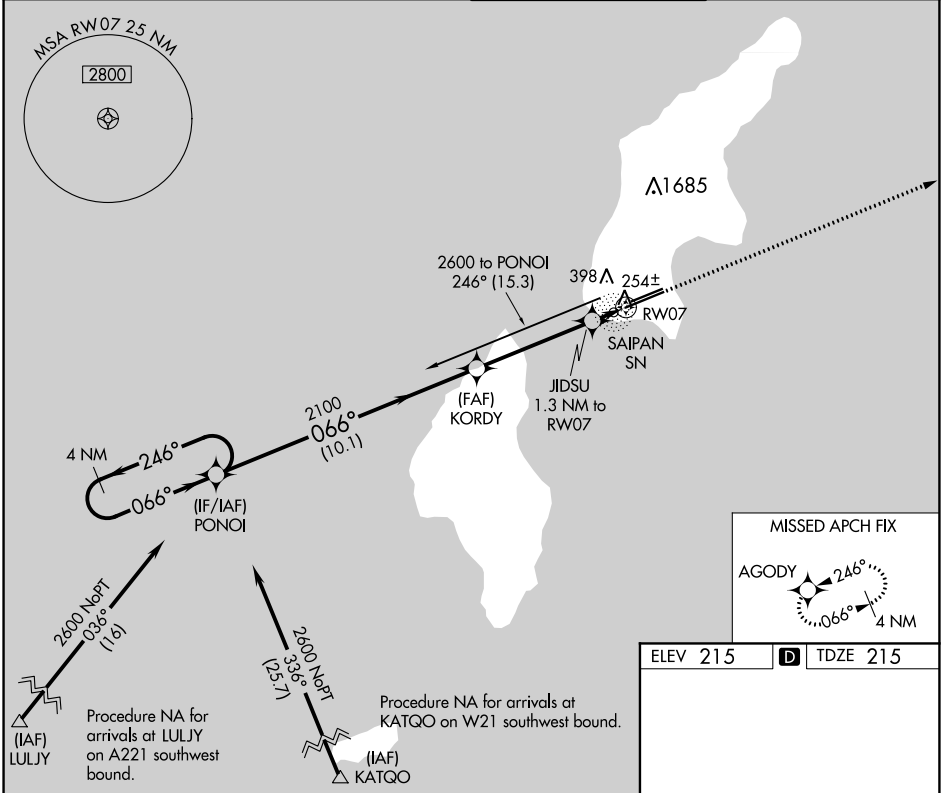
# RNAV (GPS) RWY 7

FRANCISCO C ADA/SAIPAN INTL (GSN)(PGSN)

APP CRS	Rwy Idg	<b>8700</b>
<b>066°</b>	TDZE	<b>215</b>
	Apt Elev	<b>215</b>

	Circling NA north of Rwy 6-24. DME/DME RNP-0.3 NA.	MISSED APPROACH: Climb 2600 direct AGODY and hold.

ATIS <b>127.2</b>	GUAM APP CON <b>118.4 290.5</b>	SAIPAN TOWER <b>125.7 256.9</b>	GND CON <b>121.8</b>
----------------------	------------------------------------	------------------------------------	-------------------------



ELEV 215	<b>D</b> TDZE 215
REIL Rwy 25 HIRL Rwy 7-25 and 6-24	

PAC: 16 JUL 2020 to 10 SEP 2020

PAC: 16 JUL 2020 to 10 SEP 2020