

APP CRS 246°	Rwy Idg 8700
	TDZE 210
	Apt Elev 215

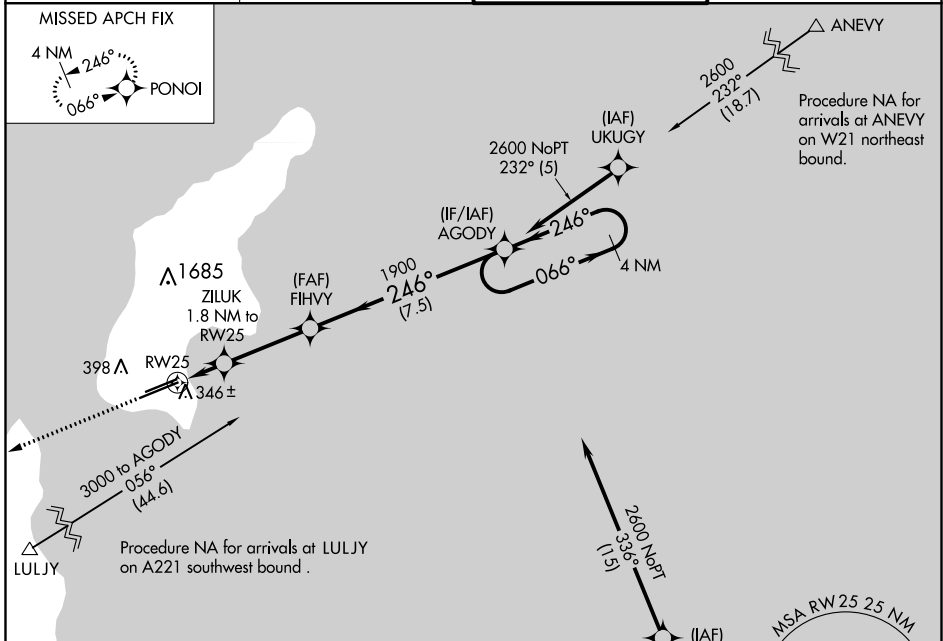
RNAV (GPS) RWY 25

FRANCISCO C ADA/SAIPAN INTL (G5N)(P5GN)

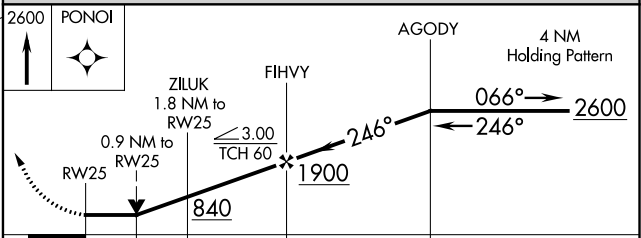
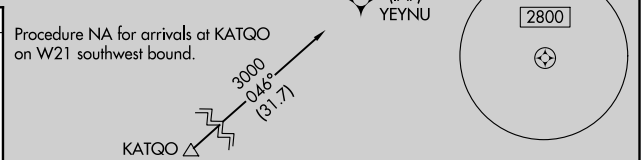
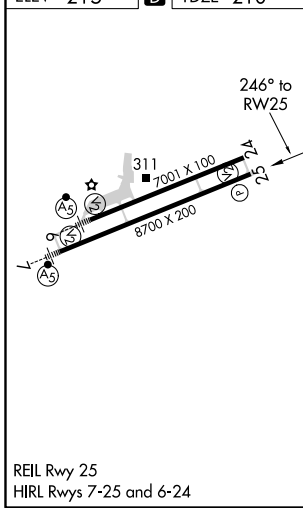
⚠ Circling NA north of Rwy 6-24.
Rwy 25 helicopter visibility reduction below ¾ NA.
DME/DME RNP-0.3 NA.

MISSED APPROACH: Climb to 2600 direct PONOI and hold.

ATIS 127.2	GUAM APP CON 118.4 290.5	SAIPAN TOWER 125.7 256.9	GND CON 121.8
----------------------	------------------------------------	------------------------------------	-------------------------



ELEV 215	D TDZE 210
----------	-------------------



CATEGORY	A	B	C	D
LNAV MDA	600-1	390 (400-1)	600-1½	390 (400-1½)
C CIRCLING	720-1	505 (600-1)	720-1½	780-2
			505 (600-1½)	565 (600-2)

PAC, 16 JUL 2020 to 10 SEP 2020

PAC, 16 JUL 2020 to 10 SEP 2020