

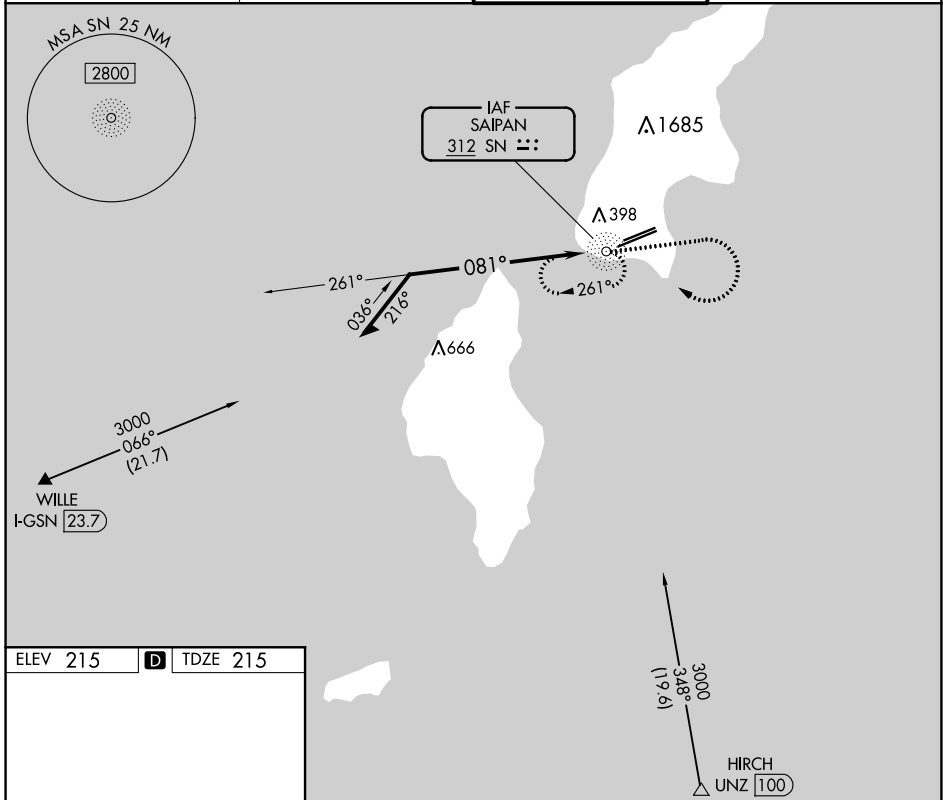
NDB SN 312	APP CRS 081°	Rwy Idg 8700
		TDZE 215
		Apt Elev 215

NDB Y RWY 7

FRANCISCO C ADA/SAIPAN INTL (GSN)(PGSN)

	Circling NA north of Rwy 6-24.	MALSR 	MISSED APPROACH: Climb to 2400 then climbing right turn to 3000 direct SN NDB and hold.

ATIS 127.2	GUAM APP CON 118.4 290.5	SAIPAN TOWER 125.7 256.9	GND CON 121.8
----------------------	------------------------------------	------------------------------------	-------------------------



ELEV 215	D	TDZE 215
----------	----------	----------

REIL Rwy 25
HIRL Rwy 7-25 and 6-24

Remain within 10 NM SN NDB 3000	2400 	3000 	SN
	2000 261°	081°	

CATEGORY	A	B	C	D
S-7	900-3/4	685 (700-3/4)	900-1 1/2	685 (700-1 1/2)
C CIRCLING	900-1	685 (700-1)	900-2 685 (700-2)	900-2 1/4 685 (700-2 1/4)

NDB Y RWY 7

PAC: 16 JUL 2020 to 10 SEP 2020

PAC: 16 JUL 2020 to 10 SEP 2020