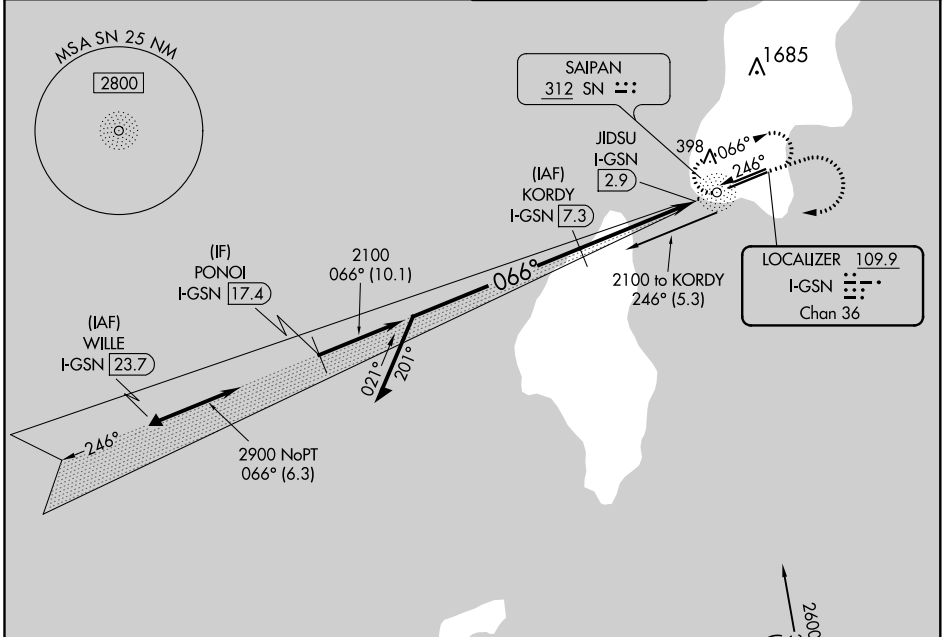


LOC/DME I-GSN 109.9 Chan 36	APP CRS 066°	Rwy Idg 8700 TDZE 215 Apt Elev 215
---	------------------------	---

ILS or LOC RWY 7
FRANCISCO C ADA/SAIPAN INTL (GSN)(PGSN)

NA Circling NA north of Rwy 6-24. ADF and DME required.	MALSR 	MISSED APPROACH: Climb to 1600 then climbing right turn to 2800 direct SN NDB and hold.
--	--	---

ATIS 127.2	GUAM APP CON 118.4 290.5	SAIPAN TOWER 125.7 256.9	GND CON 121.8
----------------------	------------------------------------	------------------------------------	-------------------------

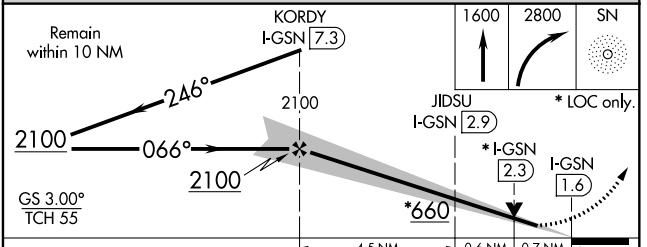
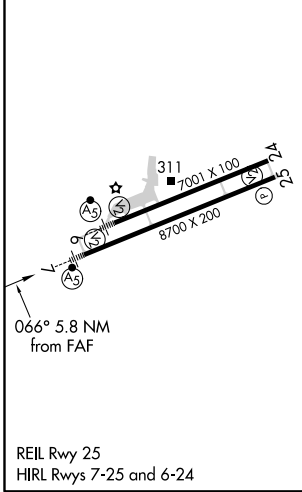


PAC, 16 JUL 2020 to 10 SEP 2020

PAC, 16 JUL 2020 to 10 SEP 2020

ELEV 215	D	TDZE 215
----------	----------	----------

DME REQUIRED



CATEGORY	A	B	C	D
S-ILS 7		415-1/2	200 (200-1/2)	
S-LOC 7		480-1/2	265 (300-1/2)	
C CIRCLING	720-1	505 (600-1)	720-1/2 505 (600-1/2)	780-2 565 (600-2)