

VORTAC OKK 113.5 Chan 82	APP CRS 204°	Rwy Idg TDZE Apt Elev N/A N/A 936
--	------------------------	---

VOR-A
SHERIDAN (5I4)

DME required.

NA Circling NA to Rwys 9 and 27. Procedure NA at night. Use Indianapolis Executive altimeter setting.

MISSED APPROACH: Climbing right turn to 2500 on OKK VORTAC R-204 to SOUSE/17 DME and hold.

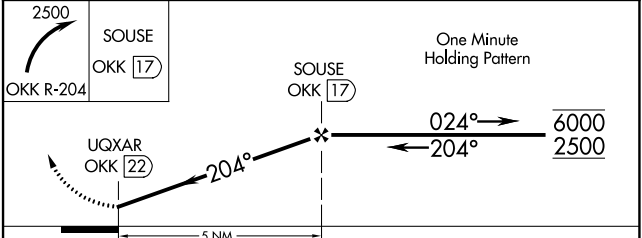
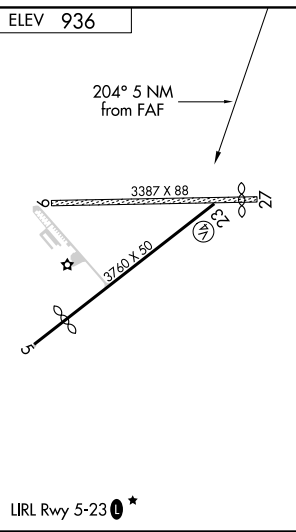
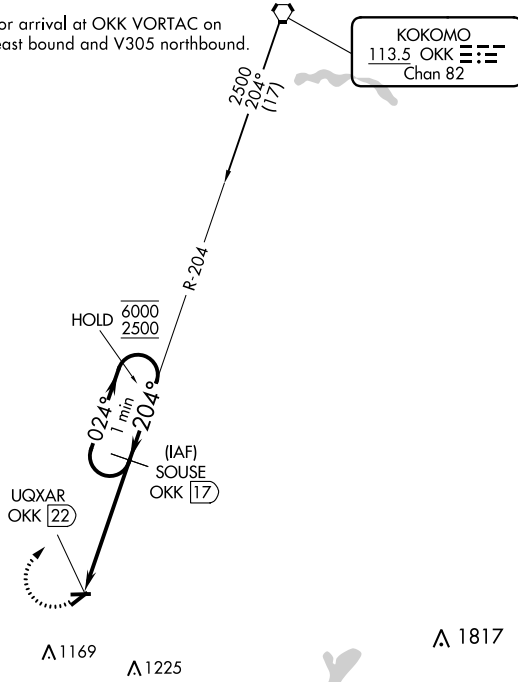
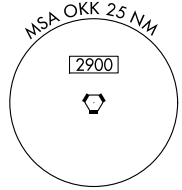
TYQ AWOS-3PT
120.725

INDIANAPOLIS APP CON
124.65 317.8

UNICOM
123.075 (CTAF)

Procedure NA for arrival at OKK VORTAC on V96-285 northeast bound and V305 northbound.

KOKOMO
113.5 OKK
Chan 82



CATEGORY	A	B	C	D
CIRCLING	1460-1 524 (600-1)	1480-1 544 (600-1)	1500-1½ 564 (600-1½)	NA

EC-2, 16 JUL 2020 to 13 AUG 2020

EC-2, 16 JUL 2020 to 13 AUG 2020