

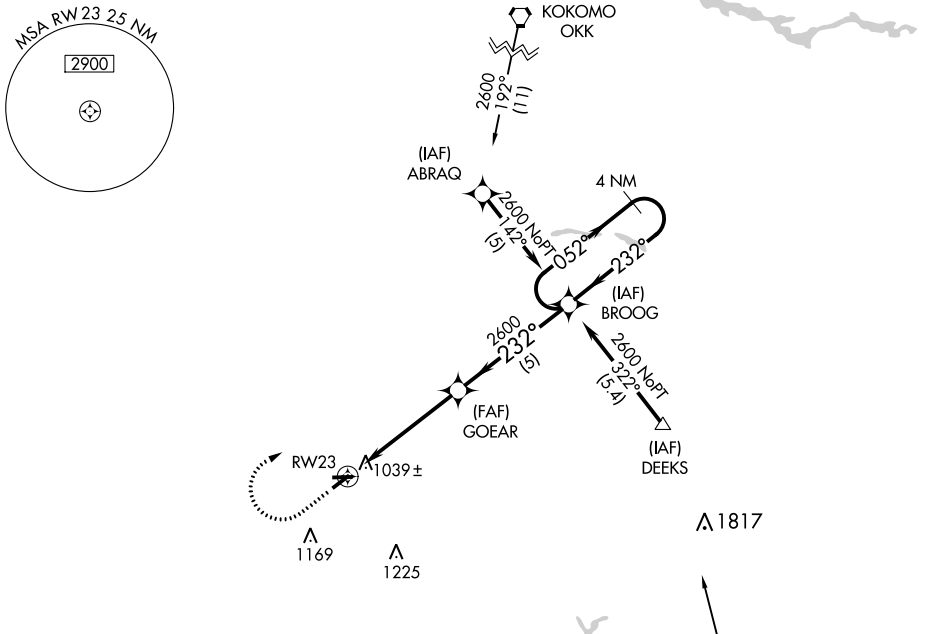
APP CRS	Rwy Idg	<b>3760</b>
<b>232°</b>	TDZE	<b>932</b>
	Apt Elev	<b>936</b>

# GPS RWY 23

SHERIDAN (5I4)

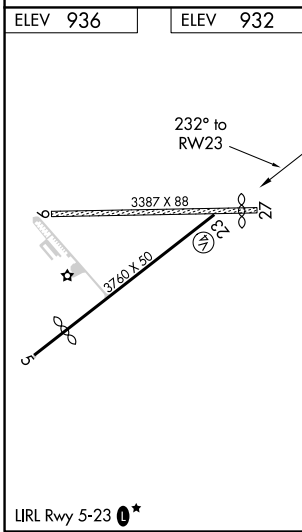
▲ NA	Use Indianapolis Intl altimeter setting. Procedure not authorized at night except by prior arrangement for runway lights. Circling NA to Rwy 9 and 27.	MISSED APPROACH: Climb to 1800 then climbing right turn to 2600 direct BROOG WP and hold.

TYQ AWOS-3PT <b>120.725</b>	INDIANAPOLIS APP CON <b>124.65 317.8</b>	UNICOM <b>123.075 (CTAF) 0</b>
--------------------------------	---	-----------------------------------



EC-2, 16 JUL 2020 to 13 AUG 2020

EC-2, 16 JUL 2020 to 13 AUG 2020



1800	2600	BROOG	4 NM Holding Pattern	
↑	↷	✧	GOEAR	BROOG
RWY 23		2600	052° →	← 232°
5 NM		5 NM		
CATEGORY	A	B	C	D
S-23	1380-1	448 (500-1)	1380-1¼ 448 (500-1¼)	NA
☑ CIRCLING	1460-1 524 (600-1)	1480-1 544 (600-1)	1500-1½ 564 (600-1½)	NA