

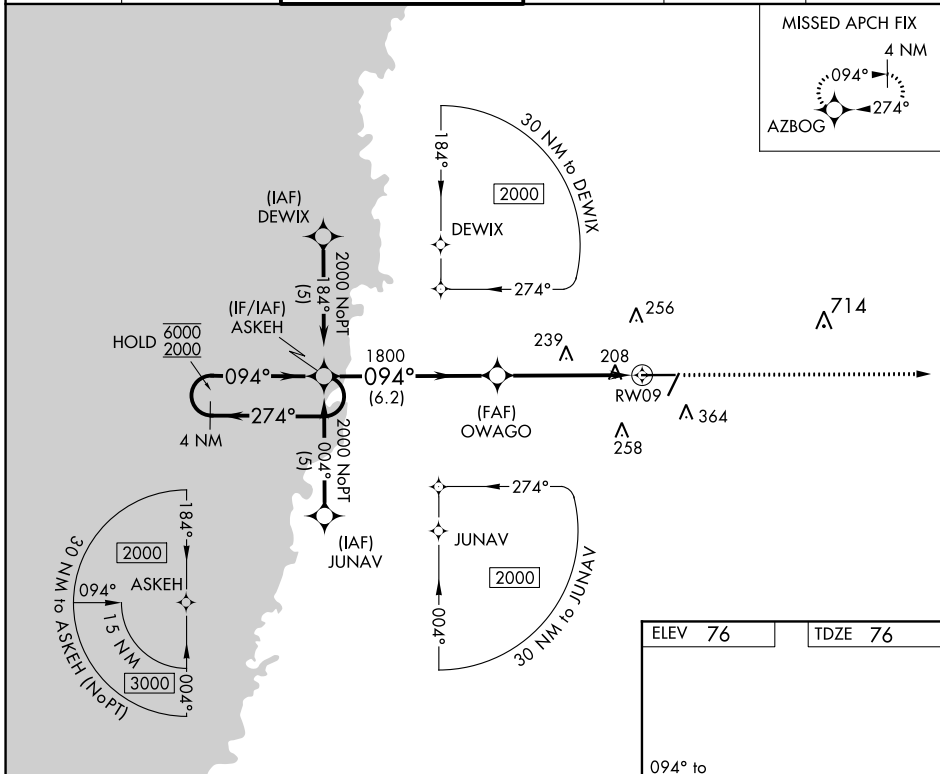
APP CRS	Rwy Idg	<b>7001</b>
<b>094°</b>	TDZE	<b>76</b>
	Apt Elev	<b>76</b>

# RNAV (GPS) RWY 9

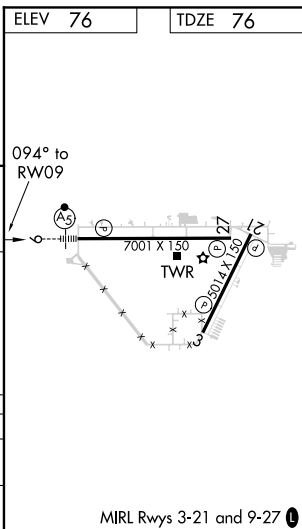
BROOKSVILLE-TAMPA BAY RGNL (BKV)

RNP APCH.	MALSR	MISSED APPROACH: Climb to 2000 direct AZBOG and hold.
<p><b>▼</b> For uncompensated Baro-VNAV systems, LNAV/VNAV NA below -15°C or above 48°C.</p> <p><b>▲</b> For inop ALS increase LNAV Cat D visibility to 1/4 SM.</p>		

ASOS	TAMPA APP CON	BROOKSVILLE TOWER ★	GND CON	CLNC DEL	UNICOM
<b>134.725</b>	<b>125.3 316.05</b>	<b>118.55 (CTAF) 0</b>	<b>121.4</b>	<b>119.125</b>	<b>123.0</b>



4 NM Holding Pattern		VGSi and RNAV glidepath not coincident (VGSi Angle 3.00/TCH 58).		2000	AZBOG
ASKEH		OWAGO		*LNAV only.	
6000	← 274°	1800	→ 094°	*1.2 NM to RW09	
2000	→ 094°	1800		RW09	
GP 3.00°		6.2 NM	4 NM	1.2	
TCH 57					
CATEGORY	A	B	C	D	
LNAV/VNAV	DA	507-1 431 (500-1)			
LNAV MDA	500-3/4 424 (500-3/4)			500-1 424 (500-1)	



SE-3, 16 JUL 2020 to 13 AUG 2020

SE-3, 16 JUL 2020 to 13 AUG 2020