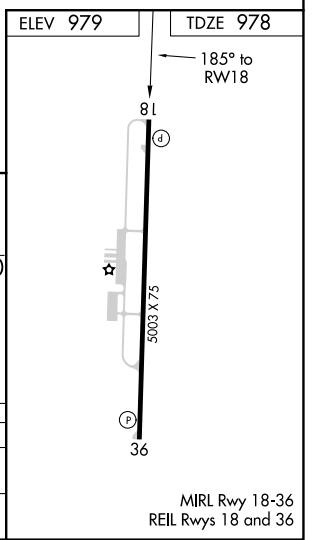
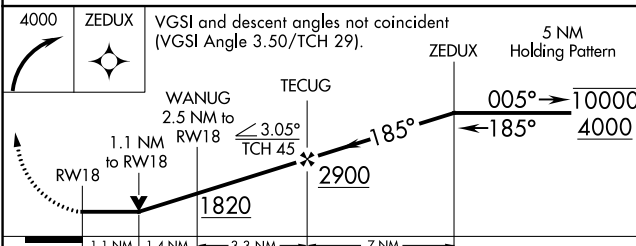
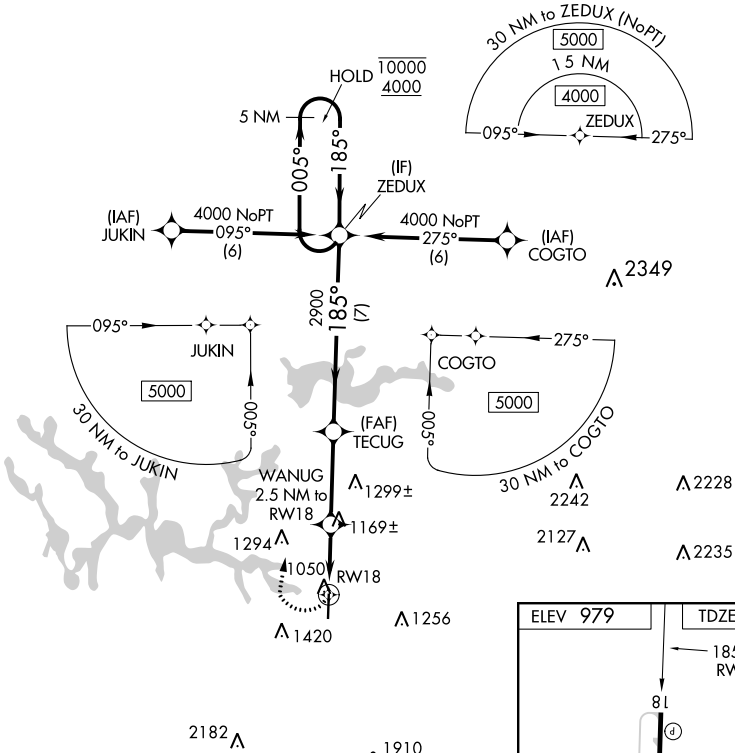


APP CRS	Rwy Idg	5003
185°	TDZE	978
	Apt Elev	979

RNAV (GPS) Y RWY 18

WINCHESTER MUNI (BGF)

RNP APCH.		MISSED APPROACH: Climbing right turn to 4000 direct ZEDUX and hold.	
Rwy 18 helicopter visibility reduction below 3/4 SM NA.		AWOS-3 121.675	MEMPHIS CENTER 128.15 323.125
		GCO 121.725	UNICOM 122.8 (CTAF)



CATEGORY	A	B	C	D
LNVA MDA	1420-1	442 (500-1)	1420-1¼ 442 (500-1¼)	1420-1½ 442 (500-1½)
CIRCLING	1460-1	481 (500-1)	1540-1½ 561 (600-1½)	1780-2½ 801 (900-2½)

SE-1, 16 JUL 2020 to 13 AUG 2020

SE-1, 16 JUL 2020 to 13 AUG 2020

MIRL Rwy 18-36
REIL Rwy 18 and 36