

APP CRS	Rwy Idg	4239
054°	TDZE	821
	Apt Elev	833

RNAV (GPS) RWY 5

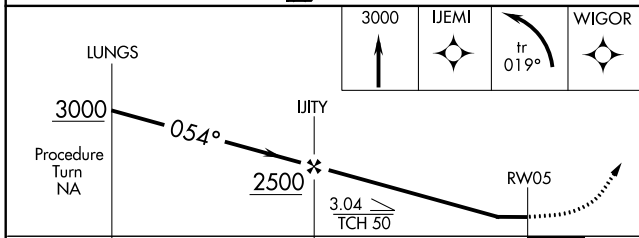
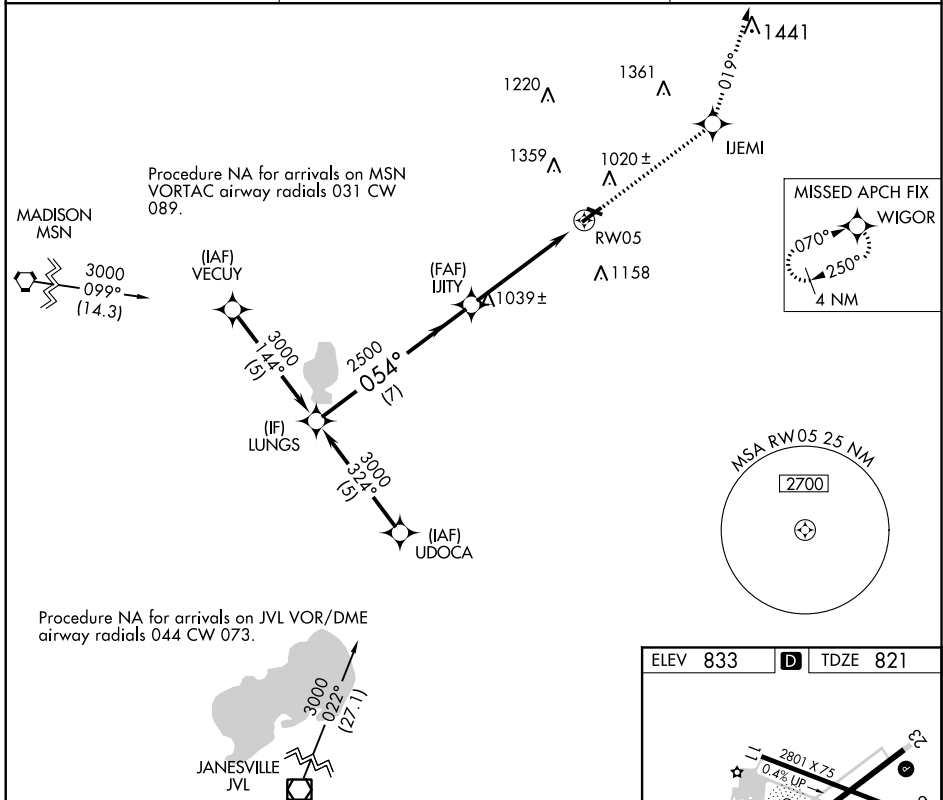
WATERTOWN MUNI (RYV)

RNP APCH.

▼ Rwy 5 helicopter visibility reduction below 3/4 SM NA. When local altimeter setting not received, use Dodge County altimeter setting. Circling Rwy 23 NA at night.

▲ MISSED APPROACH: Climb to 3000 direct IJEMI and left turn on 019° track to WIGOR and hold.

AWOS-3 119.975	MADISON APP CON * 119.15 343.7	UNICOM 122.8 (CTAF) 0
--------------------------	--	---------------------------------



ELEV 833	D	TDZE 821
----------	----------	----------

2801 X 75
0.4% UP
4429 X 75

054° to RW05

REIL Rwy 5 and 23 0
MIRL Rwy 5-23 and 11-29 0

CATEGORY	A	B	C	D
LNNAV MDA	1440-1	619 (700-1)	1440-1 3/4 619 (700-1 3/4)	1440-2 619 (700-2)
CIRCLING	1440-1	607 (700-1)	1440-1 3/4 607 (700-1 3/4)	1720-3 887 (900-3)

EC-3, 16 JUL 2020 to 13 AUG 2020

EC-3, 16 JUL 2020 to 13 AUG 2020