

APP CRS	Rwy Idg	2801
113°	TDZE	833
	Apt Elev	833

RNAV (GPS) RWY 11

WATERTOWN MUNI (RYV)

RNP APCH

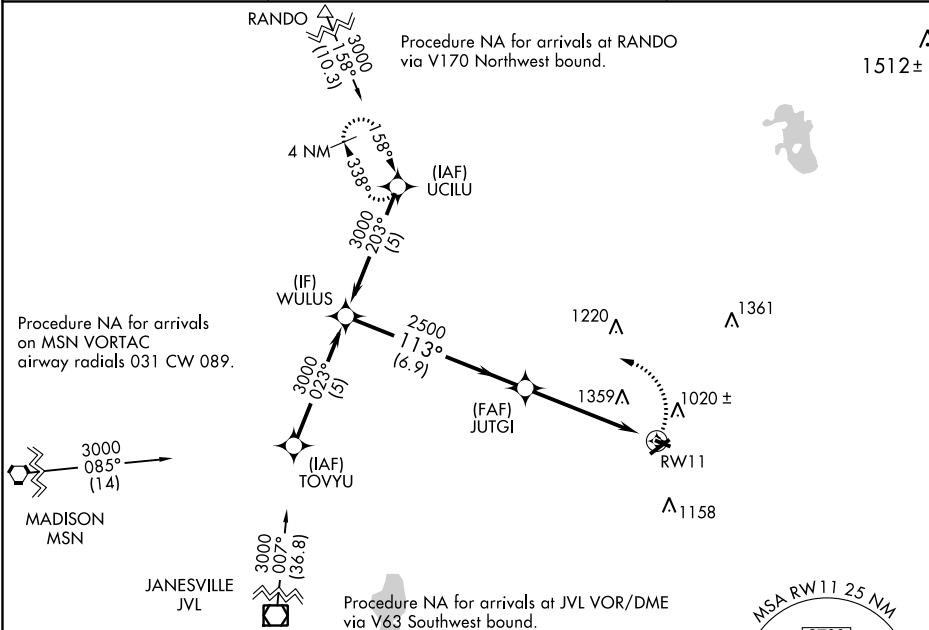
When local altimeter setting not received, use Dodge County altimeter setting and increase all MDA 60 feet, increase LNAV visibility Cat. C and D ½ mile, increase Circling visibility Cat. C ¼ mile. VDP NA when using Dodge County altimeter setting. Circling Rwy 23 NA at night.

MISSED APPROACH: Climbing left turn to 3000 direct UCILU and hold.

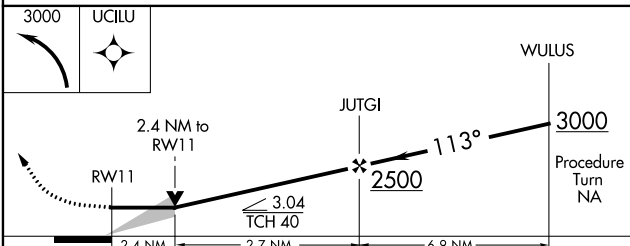
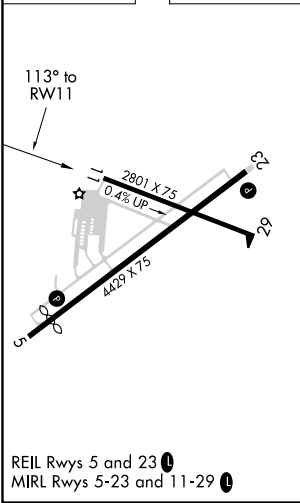
AWOS-3
119.975

MADISON APP CON *
119.15 343.7

UNICOM
122.8 (CTAF)



ELEV 833 **D** TDZE 833



CATEGORY	A	B	C	D
LNAV MDA	1640-1 807 (900-1)	1640-1¼ 807 (900-1¼)	1640-2¼ 807 (900-2¼)	1640-2½ 807 (900-2½)
CIRCLING	1640-1 807 (900-1)	1640-1¼ 807 (900-1¼)	1640-2¼ 807 (900-2¼)	1720-3 887 (900-3)

EC-3, 16 JUL 2020 to 13 AUG 2020

EC-3, 16 JUL 2020 to 13 AUG 2020