

NDB RYV <b>371</b>	APP CRS <b>254°</b>	Rwy Idg TDZE Apt Elev	<b>4429</b> <b>823</b> <b>833</b>
-----------------------	------------------------	-----------------------------	---

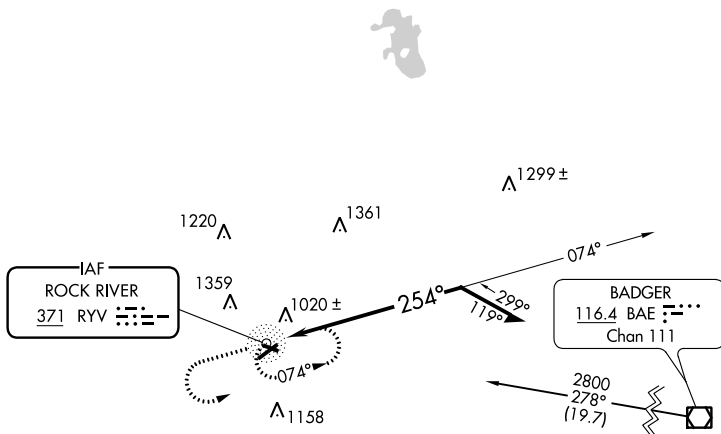
# NDB RWY 23

WATERTOWN MUNI (RYV)

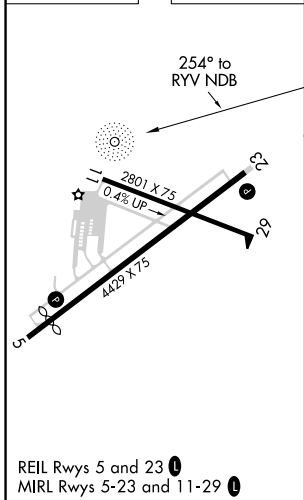
**⚠** Rwy 23 helicopter visibility reduction below 1 SM NA. When local altimeter setting not received, use Dodge County altimeter setting and increase all MDA 60 feet, and increase visibility Cat A, C and D ¼ mile. Straight-In Rwy 23 NA at night, Circling Rwy 23 NA at night.

**MISSED APPROACH:** Climb to 2800 then left turn direct RYV NDB and hold.

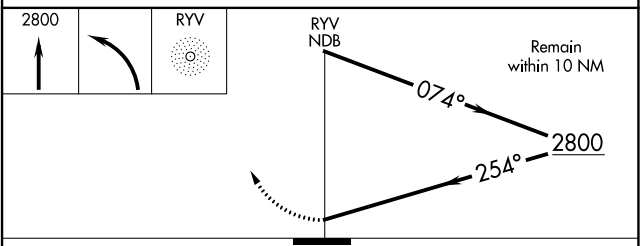
AWOS-3 <b>119.975</b>	MADISON APP CON * <b>119.15 343.7</b>	UNICOM <b>122.8 (CTAF) 0</b>
--------------------------	--	---------------------------------



ELEV 833	<b>D</b>	TDZE 823
----------	----------	----------



REIL Rwy 5 and 23  
MIRL Rwy 5-23 and 11-29



CATEGORY	A	B	C	D
S-23	1660-1 837 (900-1)	1660-1¼ 837 (900-1¼)	1660-2½ 837 (900-2½)	1660-2¾ 837 (900-2¾)
CIRCLING	1660-1 827 (900-1)	1660-1¼ 827 (900-1¼)	1660-2½ 827 (900-2½)	1720-3 887 (900-3)

EC-3, 16 JUL 2020 to 13 AUG 2020

EC-3, 16 JUL 2020 to 13 AUG 2020