

|  |                        |   |
|--|------------------------|---|
| WAAS<br>CH <b>86805</b><br><b>W36A</b> | APP CRS<br><b>002°</b> | Rwy ldg <b>4999</b><br>TDZE <b>417</b><br>Apt Elev <b>418</b> |
|--|------------------------|---|

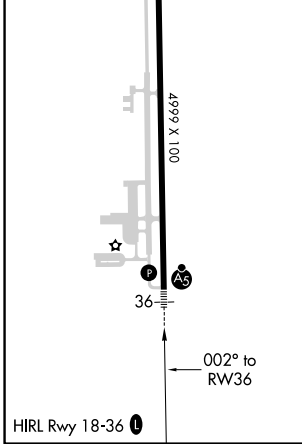
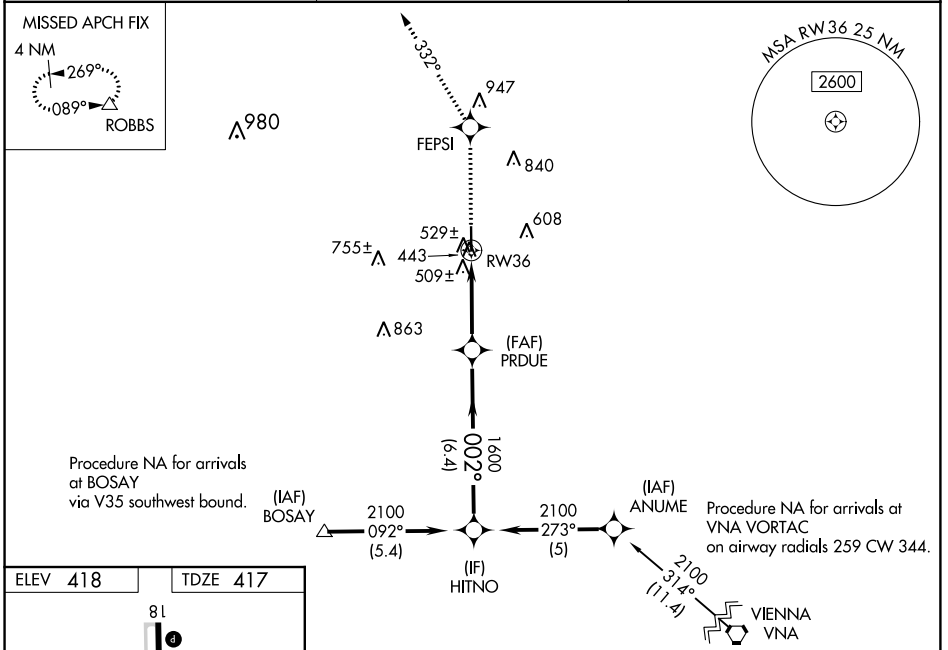
# RNAV (GPS) RWY 36

PERRY-HOUSTON COUNTY (PXE)

**NA** Baro-VNAV NA when using Macon altimeter setting. For uncompensated Baro-VNAV systems, LNAV/VNAV NA below -15°C (5°F) or above 47°C (116°F). DME/DME RNP-0.3 NA. Visibility reduction by helicopters NA. VDP NA when using Macon altimeter setting. When local altimeter setting not received use Macon altimeter setting and increase all DA 38 feet and all MDA 40 feet. For inoperative MALSR, increase LNAV all Cats visibility 1/4 mile. For inoperative MALSR, when using Macon altimeter setting, increase LNAV Cat C visibility to 1/4.

**MALSR**  
 MISSED APPROACH: Climb to 2500 direct FEPSI and on track 332° to ROBBS and hold.

|                          |   |                                  |
|--------------------------|---|----------------------------------|
| AWOS-3<br><b>123.825</b> | ATLANTA APP CON ★<br><b>124.2 279.6</b> | UNICOM<br><b>122.725(CTAF) 0</b> |
|--------------------------|---|----------------------------------|



|                   |                      |  |                              |             |                      |       |
|-------------------|----------------------|--|------------------------------|-------------|----------------------|-------|
| Procedure Turn NA | HITNO                | VGSI and RNAV glidepath not coincident (VGSI Angle 3.00/TCH 30). | 2500                         | FEPSI       | tr 332°              | ROBBS |
| GP 3.00° TCH 41   | 2100                 | PRDUE 1600   | *1.1 NM to RWY36             |             |                      |       |
| 6.4 NM            |                      | 2.5 NM   | 1.1                          | *LNAV only. |                      |       |
| CATEGORY          | A                    | B  | C                            | D           |                      |       |
| LPV DA            | 745-3/4              |  | 328 (400-3/4)                |             |                      |       |
| LNAV/VNAV DA      | 806-1                |  | 389 (400-1)                  |             |                      |       |
| LNAV MDA          | 780-3/4              |  | 363 (400-3/4)                |             | 780-1<br>363 (400-1) |       |
| CIRCLING          | 860-1<br>442 (500-1) | 880-1<br>462 (500-1)   | 960-1 1/2<br>542 (600-1 1/2) |             | 980-2<br>562 (600-2) |       |

SE-4, 16 JUL 2020 to 13 AUG 2020

SE-4, 16 JUL 2020 to 13 AUG 2020