

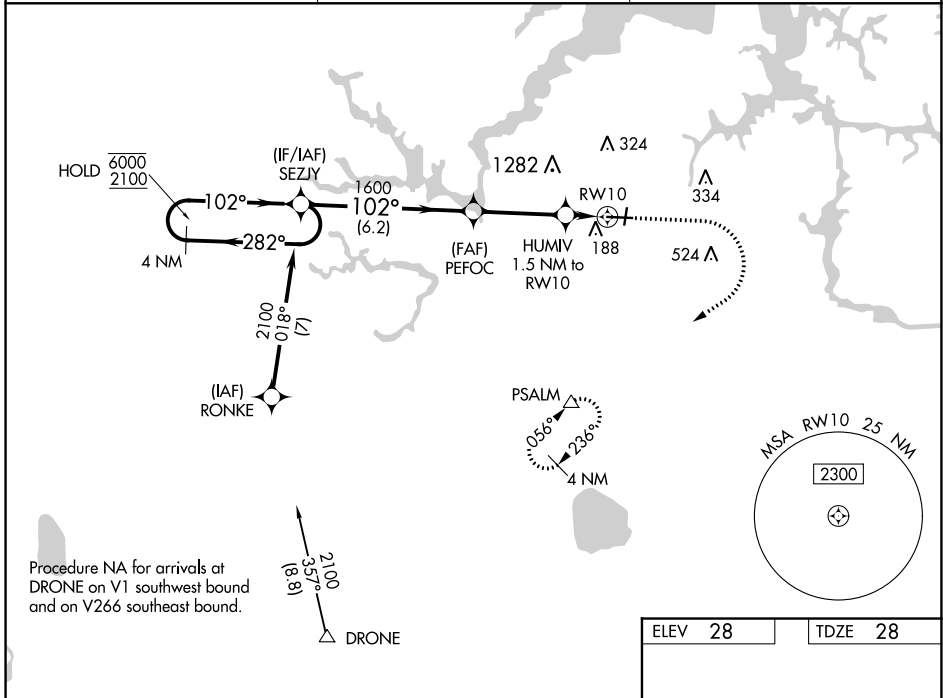
WAAS CH <b>58236</b> <b>W10A</b>	APP CRS <b>102°</b>	Rwy Idg TDZE Apt Elev	<b>5350</b> <b>28</b> <b>28</b>
--	------------------------	-----------------------------	---------------------------------------

# RNAV (GPS) RWY 10

HAMPTON ROADS EXECUTIVE (PVG)

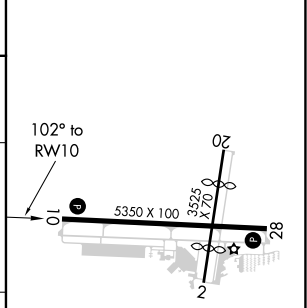
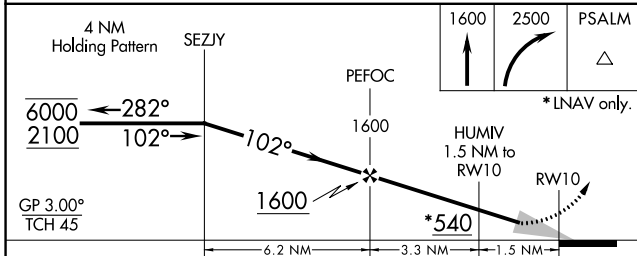
RNP APCH.	<p><b>⚠</b> Circling NA to Rwys 2 and 20. Circling Cat C NA north of Rwy 10-28.                  Rwy 10 helicopter visibility reduction below 3/4 SM NA. For uncompensated Baro-VNAV systems, LNAV/VNAV NA below -15°C or above 54°C.</p>	<p>MISSED APPROACH: Climb to 1600 then climbing right turn to 2500 direct PSALM and hold.</p>
-----------	---	---

AWOS-3PT <b>118.375</b>	NORFOLK APP CON <b>118.9 353.7</b>	UNICOM <b>122.725 (CTAF) ①</b>
----------------------------	---------------------------------------	-----------------------------------



Procedure NA for arrivals at DRONE on V1 southwest bound and on V266 southeast bound.

ELEV 28	TDZE 28
---------	---------



CATEGORY	A	B	C	D
LPV DA	228-3/4	200 (200-3/4)		NA
LNAV/VNAV DA	338-7/8	310 (400-7/8)		NA
LNAV MDA	420-1	392 (400-1)	420-1 1/8 392 (400-1 1/8)	NA
<b>C</b> CIRCLING	500-1	472 (500-1)	780-2 1/4 752 (800-2 1/4)	NA

HIRL Rwy 10-28 ①
REIL Rwys 10 and 28 ①
MIRL Rwy 2-20 ①

NE-3, 16 JUL 2020 to 13 AUG 2020

NE-3, 16 JUL 2020 to 13 AUG 2020