

WAAS CH 90511 W09A	APP CRS 091°	Rwy Idg 5000 TDZE 125 Apt Elev 125
--	------------------------	---

RNAV (GPS) RWY 9L

BARTOW EXECUTIVE (BOW)

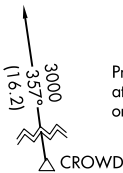
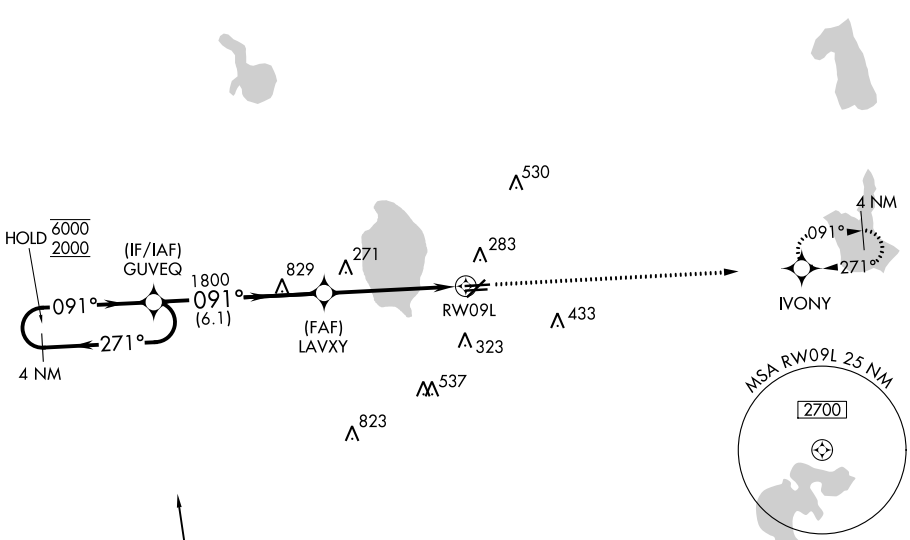
RNP APCH.

▼ Rwy 9L helicopter visibility reduction below 3/4 SM NA. When local altimeter setting not received, use Tampa Intl altimeter setting and increase LPV DA to 548 feet, LNAV/VNAV DA to 645 feet and all MDA 120 feet, increase LNAV Cat C and D visibility 1/2 SM. For uncompensated Baro-VNAV systems, LNAV/VNAV NA below -15°C or above 54°C. VDP and Baro-VNAV NA when using Tampa Intl altimeter setting.

MISSED APPROACH: Climb to 2000 direct IVONY and hold.

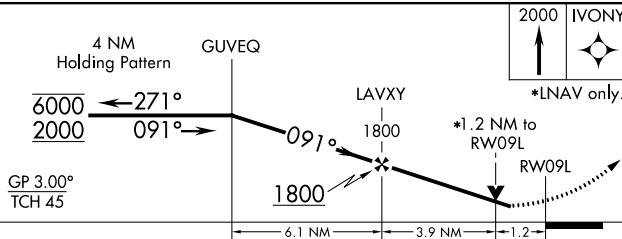
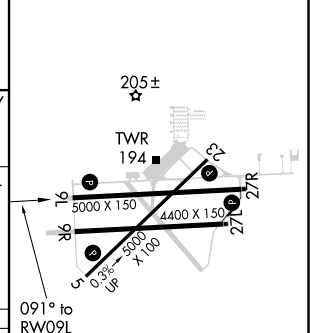
AWOS-3 123.775	TAMPA APP CON 120.65 290.3	BARTOW TOWER ★ 121.2 (CTAF)	GND CON 121.9	UNICOM 122.95
--------------------------	--------------------------------------	---------------------------------------	-------------------------	-------------------------

A1133



Procedure NA for arrival at CROWD on V7 southbound and V509 southeast bound.

ELEV 125	TDZE 125
----------	----------



CATEGORY	A	B	C	D
LPV DA		442-1 1/4	317 (400-1 1/4)	
LNAV/VNAV DA		539-1 1/2	414 (500-1 1/2)	
LNAV MDA	540-1	415 (500-1)	540-1 1/4	415 (500-1 1/4)

MIRL Rwy 5-23 and 9L-27R
REIL Rwy 5, 23, 9L and 27R

SE-3, 16 JUL 2020 to 13 AUG 2020

SE-3, 16 JUL 2020 to 13 AUG 2020