

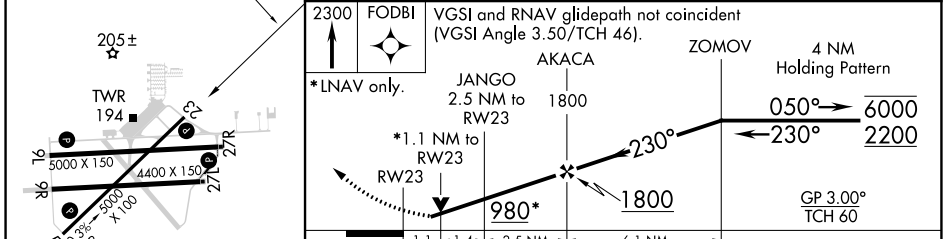
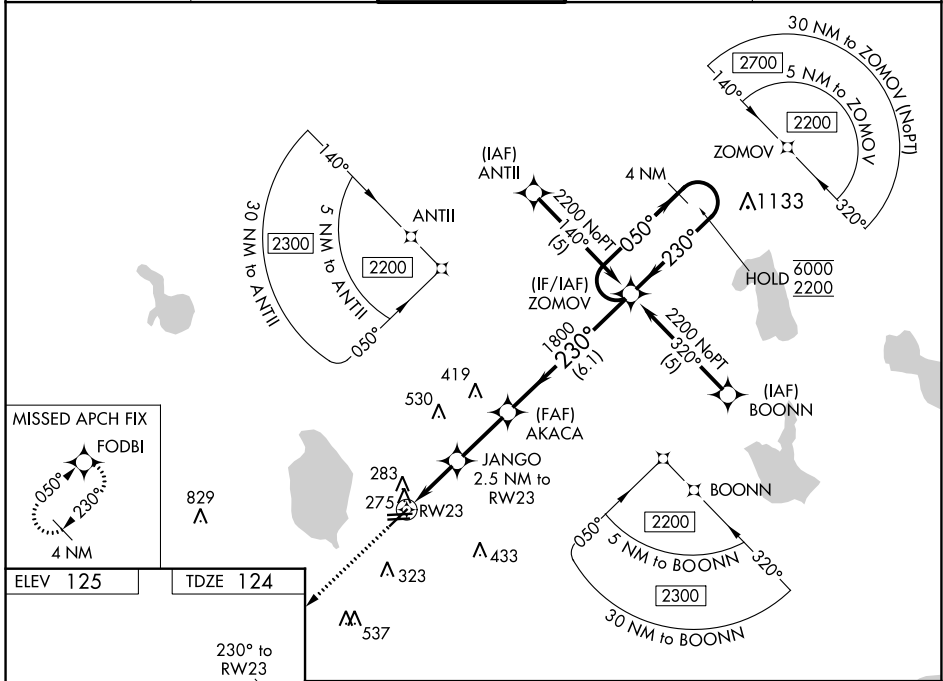
WAAS CH 63112 W23A	APP CRS 230°	Rwy Idg TDZE 124 Apt Elev 125
--	------------------------	---

RNAV (GPS) RWY 23

BARTOW EXECUTIVE (BOW)

RNP APCH.	<p>⚠ Rwy 23 helicopter visibility reduction below ¼ SM NA. When local altimeter setting not received, use Tampa Intl altimeter setting and increase LPV DA to 560 feet, LNAV/VNAV DA to 681 feet and all MDA 120 feet, increase LPV all Cats visibility ¼ SM, LNAV/VNAV all Cats ½ SM, LNAV Cat C ¼ SM, Cat D ½ SM. For uncompensated Baro-VNAV systems, LNAV/VNAV NA below -15°C or above 54°C. VDP and Baro-VNAV NA when using Tampa Intl altimeter setting.</p>	<p>MISSED APPROACH: Climb to 2300 direct FODBI and hold.</p>

AWOS-3 123.775	TAMPA APP CON 120.65 290.3	BARTOW TOWER ★ 121.20 (CTAF)	GND CON 121.9	UNICOM 122.95
--------------------------	--------------------------------------	---	-------------------------	-------------------------



ELEV 125	TDZE 124	<p>2300 FODBI</p> <p>↑</p> <p>*LNAV only.</p> <p>JANGO 2.5 NM to RWY 23</p> <p>AKACA 1800</p> <p>ZOMOV 4 NM Holding Pattern</p> <p>GP 3.00° TCH 60</p>			
		1.1	1.4	2.5 NM	6.1 NM
CATEGORY		A	B	C	D
LPV DA		454-1 330 (400-1)			
LNAV/VNAV DA		575-1½ 451 (500-1½)			
LNAV MDA		580-1 456 (500-1)	580-1⅓ 456 (500-1⅓)	580-1½ 456 (500-1½)	

MIRL Rwy 5-23 and 9L-27R
REIL Rwy 5, 23, 9L and 27R

BARTOW, FLORIDA
Orig-D 07NOV19

27°57'N-81°47'W

BARTOW EXECUTIVE (BOW)

RNAV (GPS) RWY 23

SE-3, 16 JUL 2020 to 13 AUG 2020

SE-3, 16 JUL 2020 to 13 AUG 2020