

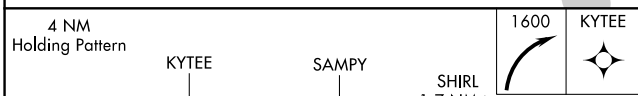
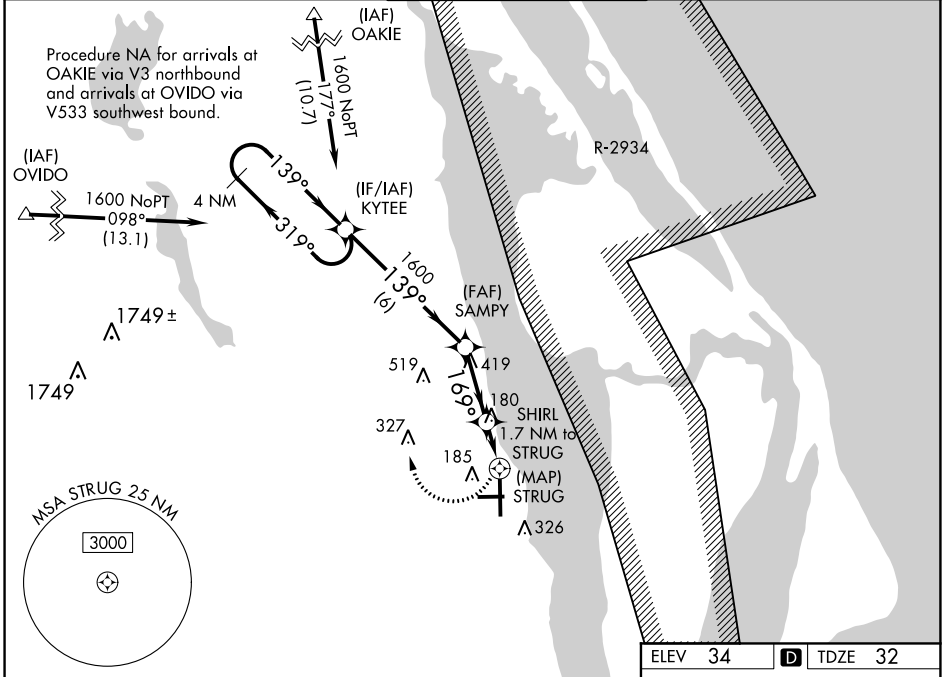
APP CRS	Rwy Idg	6930
169°	TDZE	32
	Apt Elev	34

RNAV (GPS) Y RWY 18

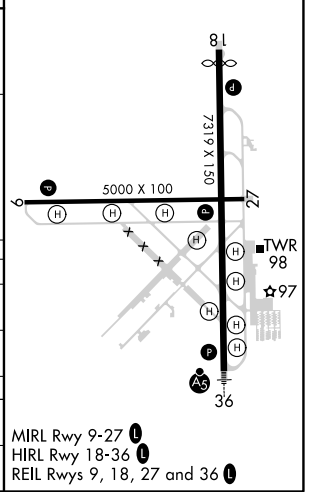
SPACE COAST RGNL (TIX)

▽	DME/DME RNP-0.3 NA. Visibility reduction by helicopters NA. When control tower closed, use Melbourne altimeter setting. VDP NA when using Melbourne altimeter setting.	MISSED APPROACH: Climbing right turn to 1600 direct KYTEE and hold.
----------	--	---

ATIS 120.625	ORLANDO APP CON 134.95 281.425	SPACE COAST TOWER ★ 118.9 (CTAF) 0	GND CON 121.85	UNICOM 122.95
------------------------	--	--	--------------------------	-------------------------



ELEV 34	D TDZE 32
---------	------------------



CATEGORY	A	B	C	D
LNVA MDA	440-1 408 (500-1)	440-1¼ 408 (500-1¼)		
CIRCLING	640-1 606 (700-1)	640-1¾ 606 (700-1¾)	640-2 606 (700-2)	
MELBOURNE ALTIMETER SETTING MINIMUMS				
LNVA MDA	500-1 468 (500-1)	500-1¼ 468 (500-1¼)	500-1½ 468 (500-1½)	
CIRCLING	700-1 666 (700-1)	700-1¾ 666 (700-1¾)	700-2 666 (700-2)	

SE-3, 16 JUL 2020 to 13 AUG 2020

SE-3, 16 JUL 2020 to 13 AUG 2020