

(INDIE7.INDIE) 19115

AL-5757 (FAA)

BAYTOWN (HPY)
BAYTOWN, TEXAS

INDIE SEVEN DEPARTURE (RNAV)

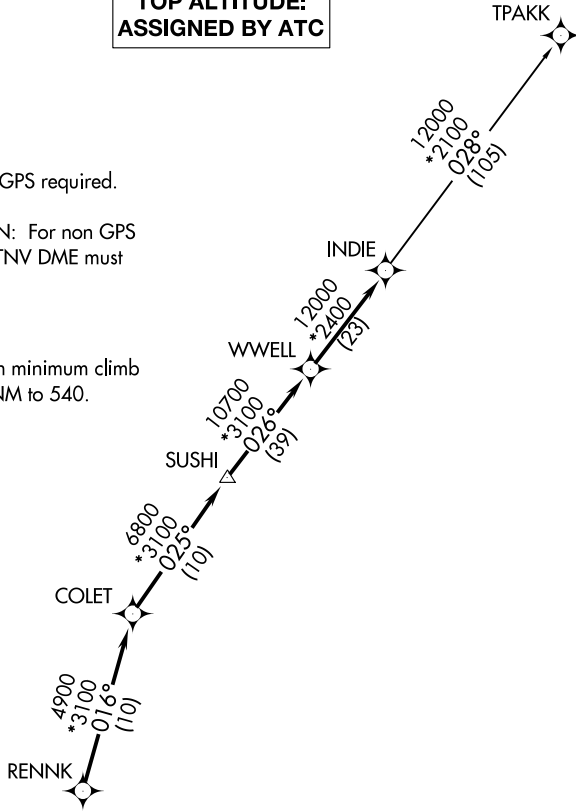
CTAF
122.8
HOUSTON DEP CON
134.45 284.0

**TOP ALTITUDE:
ASSIGNED BY ATC**

- NOTE: RADAR required.
- NOTE: DME/DME/IRU or GPS required.
- NOTE: RNAV 1.
- NOTE: TPAKK TRANSITION: For non GPS equipped aircraft TNV DME must be operational.

TAKEOFF MINIMUMS

Rwy 14, 32: Standard with minimum climb of 500' per NM to 540.



SC-5, 16 JUL 2020 to 13 AUG 2020

SC-5, 16 JUL 2020 to 13 AUG 2020

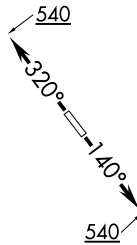
DEPARTURE ROUTE DESCRIPTION

TAKEOFF RWY 14: Climb heading 140° to 540 for RADAR vectors to RENNK, thence . . .

TAKEOFF RWY 32: Climb heading 320° to 540 for RADAR vectors to RENNK, thence . . .

. . . on track 016° to COLET, then on track 025° to SUSHI, then on track 026° to WWELL, then on track 026° to INDIE, then on (transition). Maintain ATC assigned altitude. Expect filed altitude 10 minutes after departure.

TPAKK TRANSITION (INDIE7.TPAKK)



NOTE: Chart not to scale.

INDIE SEVEN DEPARTURE (RNAV)
(INDIE7.INDIE) 25APR19

BAYTOWN, TEXAS
BAYTOWN (HPY)