

WAAS CH 77808 W34A	APP CRS 337°	Rwy Idg TDZE Apt Elev	5000 406 413
--	------------------------	-----------------------------	---

RNAV (GPS) RWY 34

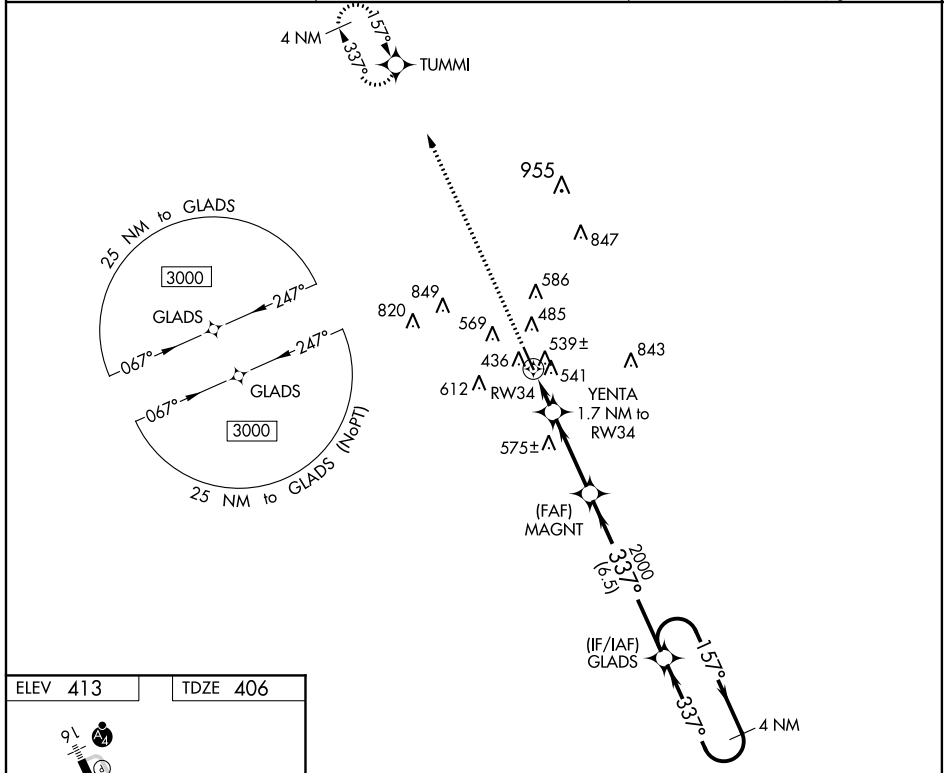
MC COMB/PIKE COUNTY/JOHN E LEWIS FIELD (M'CB)

RNP APCH.

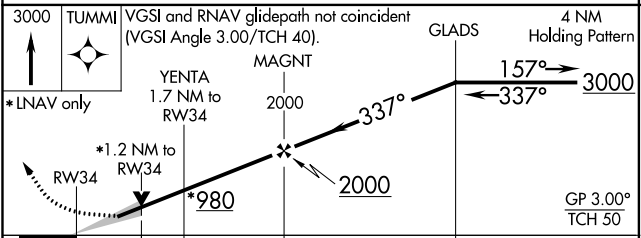
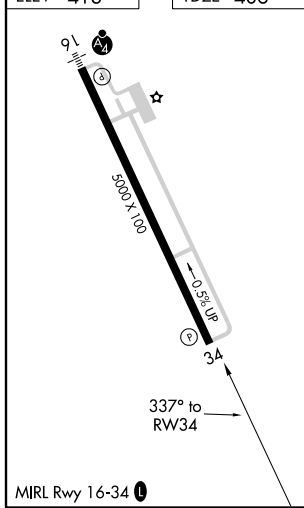
⚠ For uncompensated Baro-VNAV systems, LNAV/VNAV NA below -4°C (25°F) or above 54°C (130°F).

MISSED APPROACH: Climb to 3000 direct TUMMI and hold.

ASOS 119.025	HOUSTON CENTER 126.8 327.8	UNICOM 123.05 (CTAF) 0
------------------------	--------------------------------------	----------------------------------



ELEV 413	TDZE 406
-----------------	-----------------



CATEGORY	A	B	C	D
LPV DA		606-3/4	200 (200-3/4)	
LNAV/VNAV DA		739-1	333 (400-1)	
LNAV MDA	800-1	394 (400-1)	800-1 1/8	394 (400-1 1/8)
C CIRCLING	880-1	467 (500-1)	940-1 1/2 527 (600-1 1/2)	1160-2 1/2 747 (800-2 1/2)

RNAV (GPS) RWY 34

SC-4, 16 JUL 2020 to 13 AUG 2020

SC-4, 16 JUL 2020 to 13 AUG 2020