

LOC I-MCB 109.1	APP CRS 157°	Rwy Idg 5000
		TDZE 413
		Apt Elev 413

ILS or LOC RWY 16

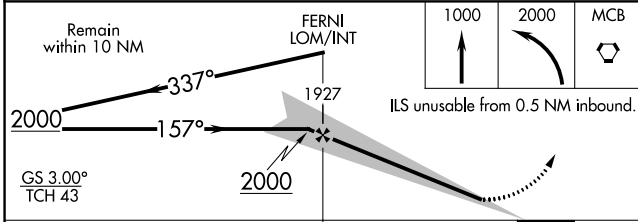
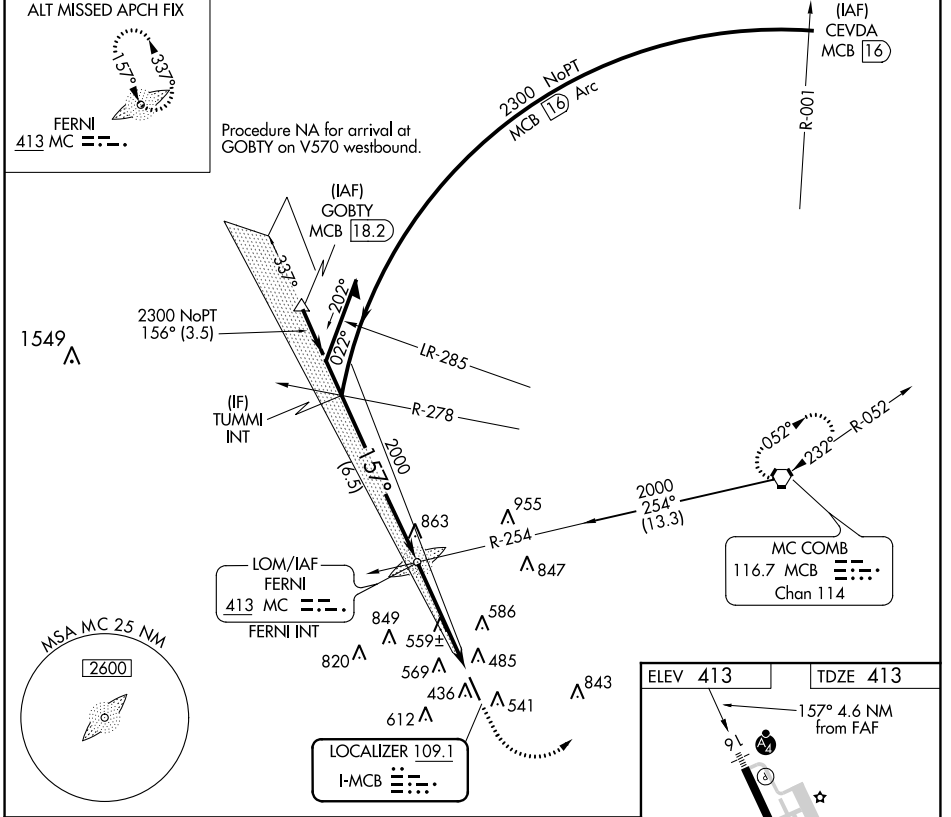
MC COMB/PIKE COUNTY/JOHN E LEWIS FIELD (MCB)

⚠ Inop table does not apply to S-ILS 16 all Cats and S-LOC 16 Cats C and D.

MALSF

MISSED APPROACH: Climb to 1000 then climbing left turn to 2000 direct MCB VORTAC and hold.

ASOS 119.025	HOUSTON CENTER 126.8 327.8	UNICOM 123.05 (CTAF) 0
------------------------	--------------------------------------	----------------------------------



ELEV 413	TDZE 413
157° 4.6 NM from FAF	
500 X 100	
0.5% UP	
34	
MIRL Rwy 16-34	
FAF to MAP 4.1 NM	
Knots	60 90 120 150 180
Min:Sec	4:06 2:44 2:03 1:38 1:22

CATEGORY	A	B	C	D
S-ILS 16	632-3/4		219 (300-3/4)	
S-LOC 16	820-3/4 407 (500-3/4)		820-1/4 407 (500-1/4)	
C CIRCLING	880-1 467 (500-1)		940-1 1/2 747 (800-1/2)	
			1160-2 1/2 747 (800-2 1/2)	

SC-4, 16 JUL 2020 to 13 AUG 2020

SC-4, 16 JUL 2020 to 13 AUG 2020