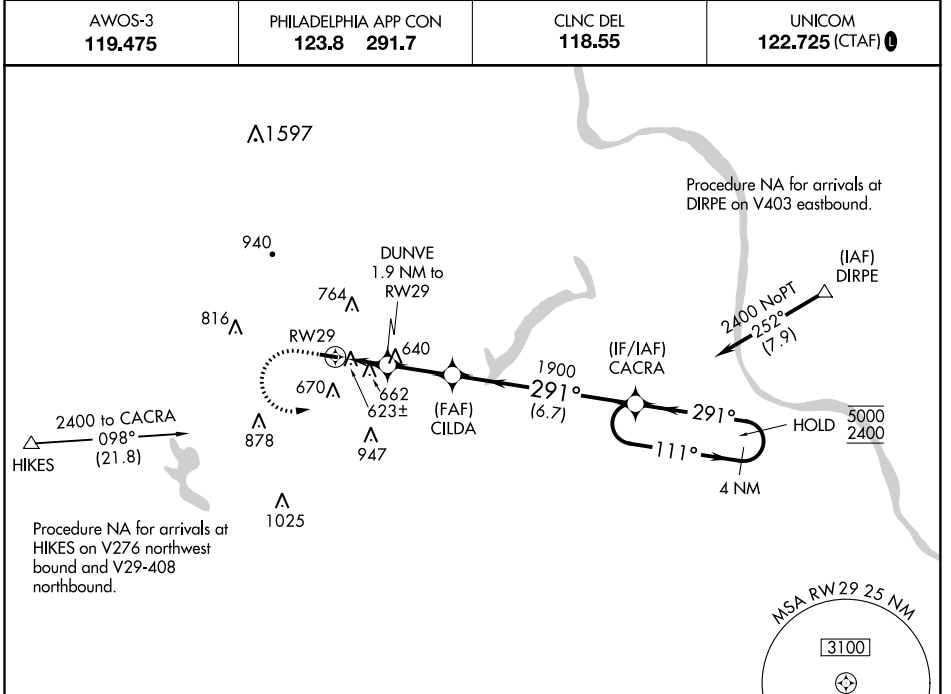


WAAS CH 61228 W29A	APP CRS 291°	Rwy Idg TDZE Apt Elev	3020 525 525
--	------------------------	-----------------------------	---

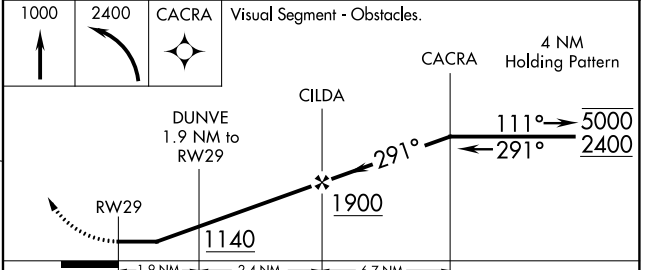
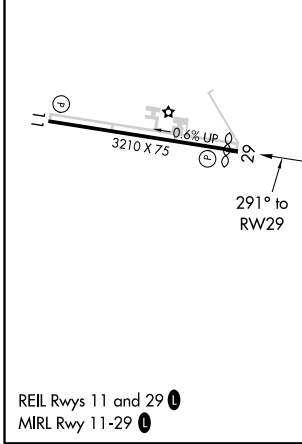
RNAV (GPS) RWY 29

QUAKERTOWN (UKT)

RNP APCH.	Procedure NA at night. Rwy 29 helicopter visibility reduction below 1 SM NA.	MISSED APPROACH: Climb to 1000, then climbing left turn to 2400 direct CACRA and hold.	
AWOS-3 119.475		PHILADELPHIA APP CON 123.8 291.7	CLNC DEL 118.55



ELEV 525	D	TDZE 525
----------	----------	----------



CATEGORY	A	B	C	D
LP MDA	920-1	395 (400-1)	920-1 $\frac{1}{8}$ 395 (400-1 $\frac{1}{8}$)	NA
LNAV MDA	960-1	435 (500-1)	960-1 $\frac{3}{8}$ 435 (500-1 $\frac{3}{8}$)	NA
C CIRCLING	1040-1 515 (600-1)	1080-1 555 (600-1)	1220-2 695 (700-2)	NA

NE-4, 16 JUL 2020 to 13 AUG 2020

NE-4, 16 JUL 2020 to 13 AUG 2020