

VOR/DME BSV 112.4 Chan 71	APP CRS 115°	Rwy Idg 5189 TDZE 1113 Apt Elev 1136
---	------------------------	---

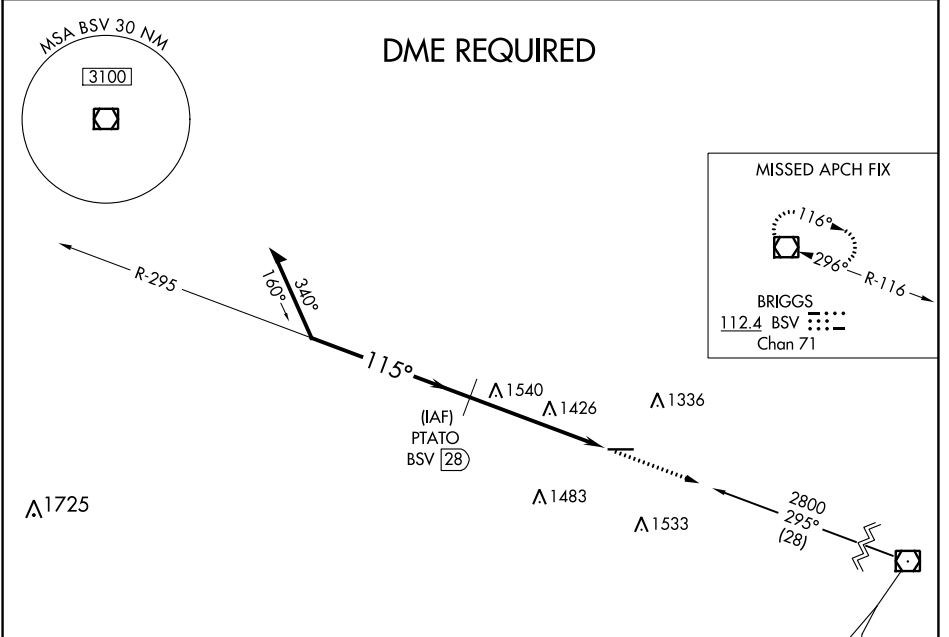
VOR RWY 10

WAYNE COUNTY (BJJ)

⚠ DME required. When local altimeter setting not received, use Akron-Canton Rgnl altimeter setting and increase all MDA 60 feet; increase S-10 Cat C/D and Circling Cat C/D visibilities ¼ mile. Rwy 10 helicopter visibility reduction below ¾ SM NA.

⚠ MISSED APPROACH: Climb to 2800 direct BSV VOR/DME and hold.

ASOS 118.075	CLEVELAND APP CON * 118.6 371.875	CLNC DEL 121.75	UNICOM 122.8 (CTAF) 0
------------------------	---	---------------------------	---------------------------------



ELEV 1136	TDZE 1113
-----------	-----------



2800	BSV
↑	☐

VGSI and descent angle not coincident (VGSI Angle 3.04/TCH 33).

FAF to MAP 5.3 NM					
Knots	60	90	120	150	180
Min:Sec	5:18	3:32	2:39	2:07	1:46

CATEGORY	A	B	C	D
S-10	1840-1 727 (800-1)	1840-1 ¼ 727 (800-1 ¼)	1840-2 727 (800-2)	1840-2 ¼ 727 (800-2 ¼)
CIRCLING	1840-1 704 (800-1)	1840-1 ¼ 704 (800-1 ¼)	1840-2 704 (800-2)	1840-2 ¼ 704 (800-2 ¼)

EC-2, 16 JUL 2020 to 13 AUG 2020

EC-2, 16 JUL 2020 to 13 AUG 2020