

WAAS CH <b>57925</b> <b>W06A</b>	APP CRS <b>059°</b>	Rwy Idg <b>4201</b> TDZE <b>76</b> Apt Elev <b>81</b>
--	------------------------	---

# RNAV (GPS) RWY 6

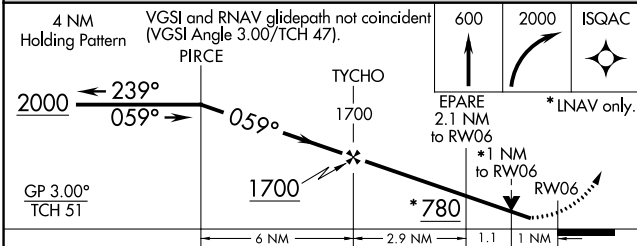
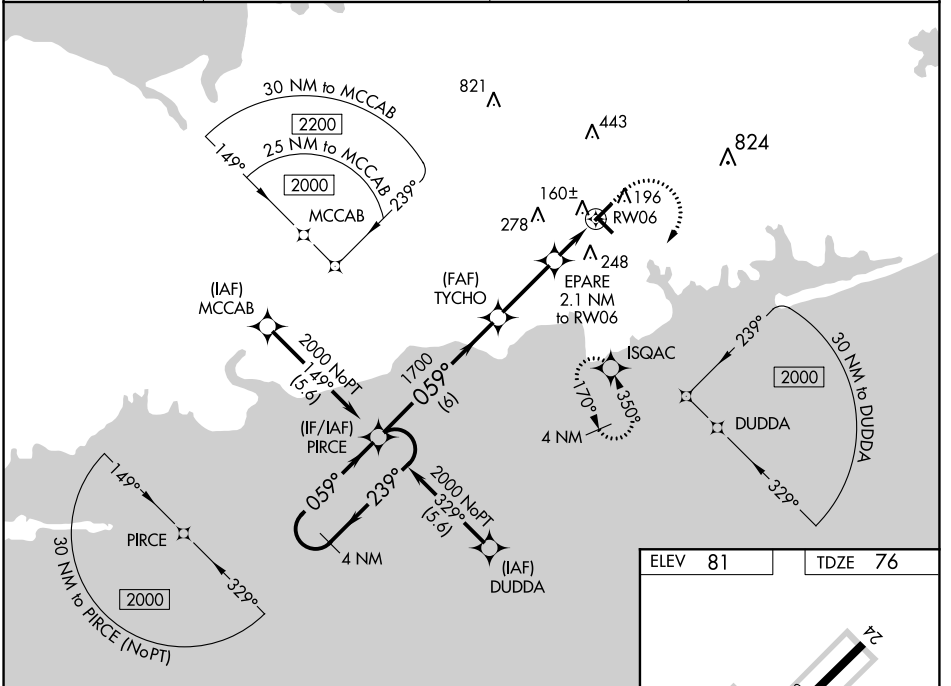
BROOKHAVEN (HWV)

**⚠** DME/DME RNP-0.3 NA. Helicopter visibility reduction below ¾ SM NA. When local altimeter setting not received, use Isip altimeter setting and increase all DA 28 feet and all MDA 40 feet. Inoperative table does not apply to LNAV/VNAV. For inoperative MALSR, increase LPV all Cats visibility to ¾ mile, increase LNAV all Cats visibility to 1 mile. For inoperative MALSR when using Isip altimeter setting, increase LPV and LNAV/VNAV all Cats visibility to ¾ mile, increase LNAV all Cats visibility to 1 mile. Baro-VNAV and VDP NA with Isip altimeter setting. For uncompensated Baro-VNAV systems, LNAV/VNAV NA below -15°C (5°F) or above 54°C (130°F).

**MALSR**

**MISSED APPROACH:**  
Climb to 600 then climbing right turn to 2000 direct ISQAC and hold.

ASOS <b>119.625</b>	NEW YORK APP CON <b>120.05 343.75</b>	CLNC DEL <b>133.2</b>	UNICOM <b>122.8 (CTAF) 1</b>
------------------------	--	--------------------------	---------------------------------



ELEV 81	TDZE 76
---------	---------

REIL Rwy 15, 24 and 33 1  
MIRL Rwy 6-24 and 15-33 1

CATEGORY	A	B	C	D
LPV DA	339-¾	263 (300-¾)		NA
LNAV/VNAV DA	326-¾	250 (300-¾)		NA
LNAV MDA	420-¾	344 (400-¾)		NA
<b>CIRCLING</b>	560-1	479 (500-1)		NA

NE-2, 16 JUL 2020 to 13 AUG 2020

NE-2, 16 JUL 2020 to 13 AUG 2020