

WESTMINSTER, MARYLAND

AL-5533 (FAA)

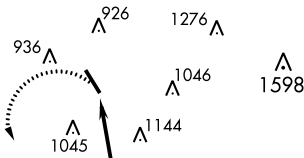
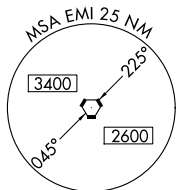
19115

VORTAC EMI 117.9 Chan 126	APP CRS 358°	Rwy Idg TDZE Apt Elev	5100 788 789
---	------------------------	-----------------------------	---

VOR RWY 34

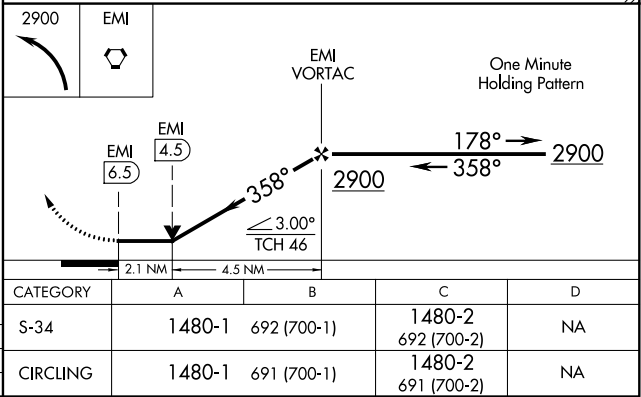
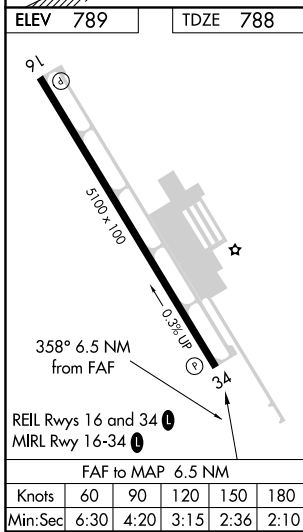
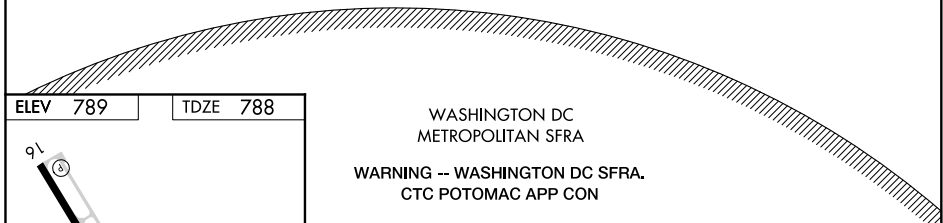
CARROLL COUNTY RGNL/JACK B POAGE FIELD (DMW)

NA		MISSED APPROACH: Climbing left turn to 2900 direct EMI VORTAC and hold.	
AWOS-3 121.25	POTOMAC APP CON 125.525 291.625	GCO 121.725	UNICOM 122.7 (CTAF) 0



NE-3, 16 JUL 2020 to 13 AUG 2020

NE-3, 16 JUL 2020 to 13 AUG 2020



WESTMINSTER, MARYLAND
Amdt 4B 31AUG06

CARROLL COUNTY RGNL/JACK B POAGE FIELD (DMW)
39°36'N-77°00'W

VOR RWY 34