

WESTMINSTER, MARYLAND

AL-5533 (FAA)

19115

WAAS CH 82117 W34A	APP CRS 339°	Rwy Idg 5100 TDZE 788 Apt Elev 789
--	------------------------	---

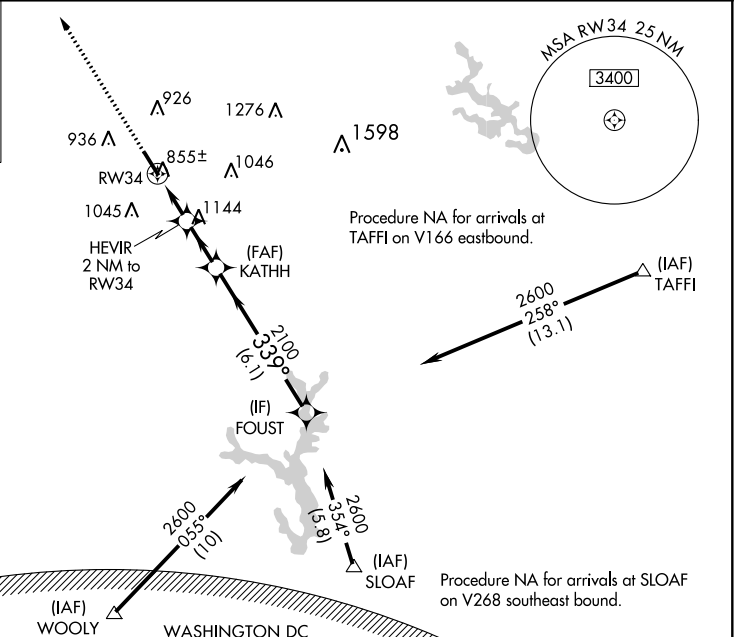
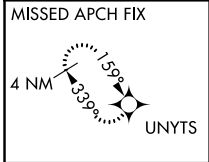
RNAV (GPS) RWY 34
CARROLL COUNTY RGNL/JACK B POAGE FIELD (DMW)

RNP APCH

▼ For uncompensated Baro-VNAV systems, LNAV/VNAV NA
▲ below -16°C (4°F) or above 54°C (130°F).

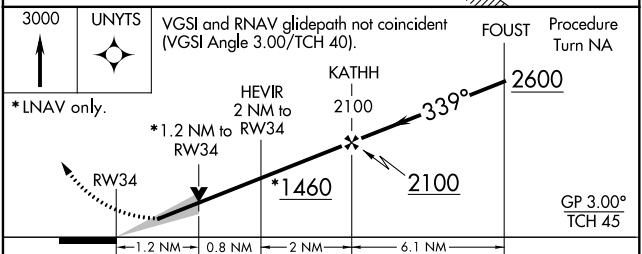
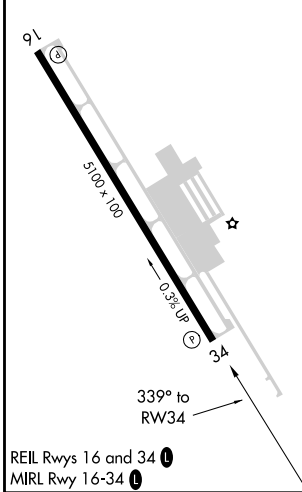
MISSED APPROACH: Climb to 3000 direct UNYTS and hold

AWOS-3 121.25	POTOMAC APP CON 125.525 291.625	GCO 121.725	UNICOM 122.7 (CTAF) 0
-------------------------	---	-----------------------	---------------------------------



ELEV 789 TDZE 788

WASHINGTON DC METROPOLITAN SFRA
WARNING -- WASHINGTON DC SFRA.
CTC POTOMAC APP CON



CATEGORY	A	B	C	D
LPV DA	988-1	200 (200-1)		NA
LNAV/VNAV DA	1105-1½	317 (400-1½)		NA
LNAV MDA	1180-1	392 (400-1)		NA
CIRCLING	1320-1	531 (600-1)		NA

WESTMINSTER, MARYLAND
Amdt 1B 21JUN18

CARROLL COUNTY RGNL/JACK B POAGE FIELD (DMW)
39°36'N-77°00'W
RNAV (GPS) RWY 34

NE-3, 16 JUL 2020 to 13 AUG 2020

NE-3, 16 JUL 2020 to 13 AUG 2020