

WAAS CH 65607 W16A	APP CRS 159°	Rwy Idg TDZE 789 Apt Elev 789	5100
--	------------------------	---	-------------

RNAV (GPS) RWY 16

CARROLL COUNTY RGNL/JACK B POAGE FIELD (DMW)

▼ Baro-VNAV NA when using Frederick altimeter setting. For uncompensated Baro-VNAV systems, LNAV/VNAV NA below -16°C (4°F) or above 54°C (130°F). When local altimeter setting not received, use Frederick altimeter setting and increase all DA 116 feet and all MDA 120 feet; increase LPV all Cats and LNAV Cat C visibility 3/8 mile, and LNAV/VNAV all Cats visibility to 1 3/4 mile and Circling Cat C visibility 1/4 mile. When VGSI inop, Straight-in/Circling Rwy 16 procedure NA at night. DME/DME RNP-0.3 NA. Visibility reduction by helicopters NA.

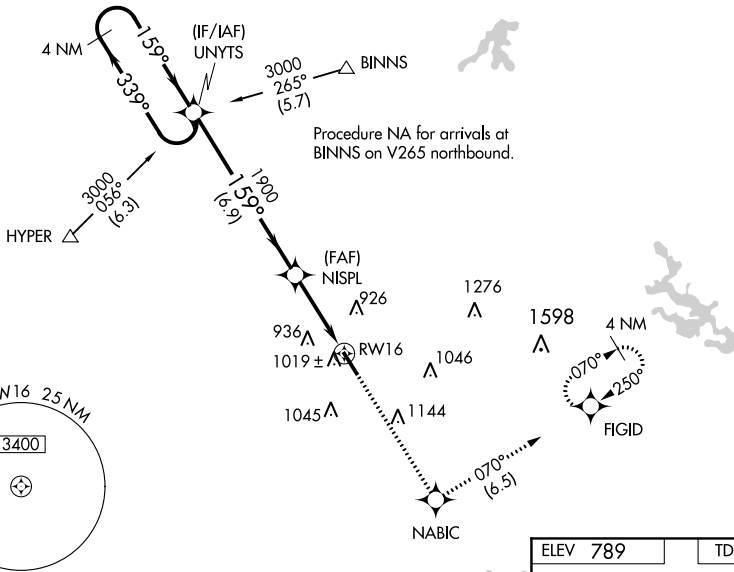
MISSED APPROACH: Climb to 2200 direct NABIC then climbing left turn to 3000 on track 070° to FIGID and hold.

AWOS-3
121.25

POTOMAC APP CON
125.525 291.625

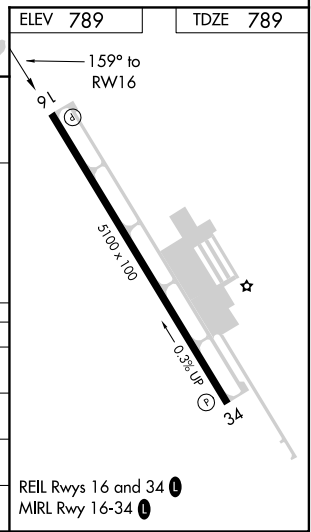
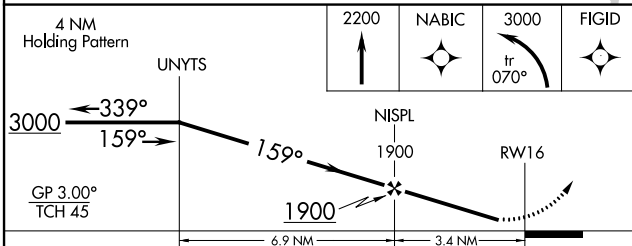
GCO
121.725

UNICOM
122.7 (CTAF) 0



NE-3, 16 JUL 2020 to 13 AUG 2020

NE-3, 16 JUL 2020 to 13 AUG 2020



CATEGORY	A	B	C	D
LPV DA	1081-1 292 (300-1)			NA
LNAV/ VNAV DA	1189-1 3/8 400 (400-1 3/8)			NA
LNAV MDA	1280-1	491 (500-1)	1280-1 3/8 491 (500-1 3/8)	NA
CIRCLING	1320-1	531 (600-1)	1320-1 1/2 531 (600-1 1/2)	NA

REIL Rwy 16 and 34 **0**
MIRL Rwy 16-34 **0**

RNAV (GPS) RWY 16