

NDB RWY 4

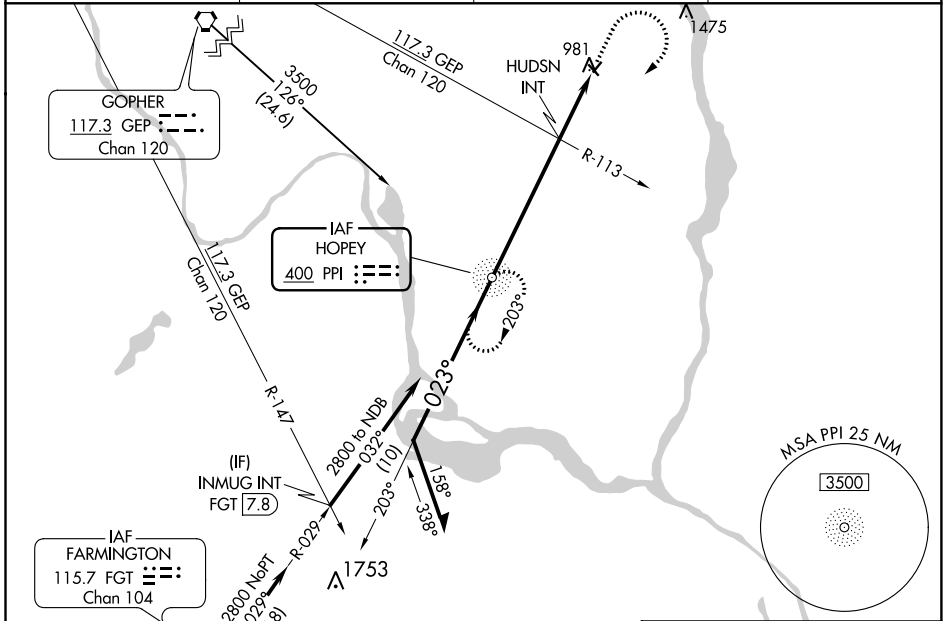
LAKE ELMO (21D)

NDB PPI 400	APP CRS 023°	Rwy Idg 2496
		TDZE 933
		Apt Elev 933

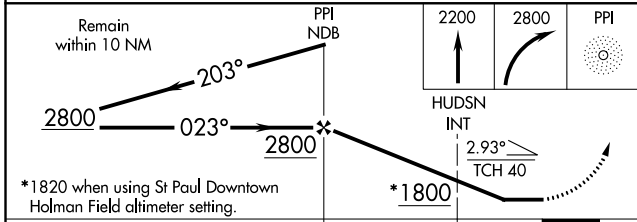
▼ Straight-in minimums NA at night. Visibility reduction by helicopters NA. When local altimeter setting not received, use St Paul Downtown Holman Field altimeter setting and increase all MDA 60 feet, increase S-4 Cat A and Circling Cat C visibility ¼ mile. HUDSN fix minimums; increase all Cats C visibility ½ mile. Circling Rwy 14/22 NA at night. When VGSI inoperative, Circling Rwy 32 NA at night.

MISSED APPROACH: Climb to 2200 then climbing right turn to 2800 direct PPI NDB and hold.

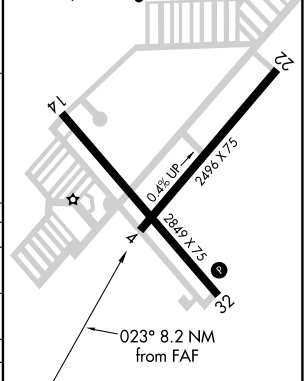
AWOS-3 120.075	MINNEAPOLIS APP CON 121.2 335.65	CLNC DEL 118.625	UNICOM 122.8 (CTAF) 0
--------------------------	--	----------------------------	---------------------------------



Procedure NA for arrivals on FGT VORTAC airway radials 339 CW 071.



ELEV 933	TDZE 933
REIL Rwy 14 and 32 0	
MIRL Rwy 14-32 0	



CATEGORY	A	B	C	D
S-4	1800-1 867 (900-1)	1800-1¼ 867 (900-1¼)	1800-2½ 867 (900-2½)	NA
CIRCLING	1800-1¼	867 (900-1¼)	1800-2½ 867 (900-2½)	NA
HUDSN FIX MINIMUMS				
S-4	1600-1	667 (700-1)	1600-1⅞ 667 (700-1⅞)	NA
CIRCLING	1600-1	667 (700-1)	1600-1⅞ 667 (700-1⅞)	NA

FAF to MAP 8.2 NM					
Knots	60	90	120	150	180
Min:Sec	8:12	5:28	4:06	3:17	2:44

NC-1, 16 JUL 2020 to 13 AUG 2020

NC-1, 16 JUL 2020 to 13 AUG 2020