

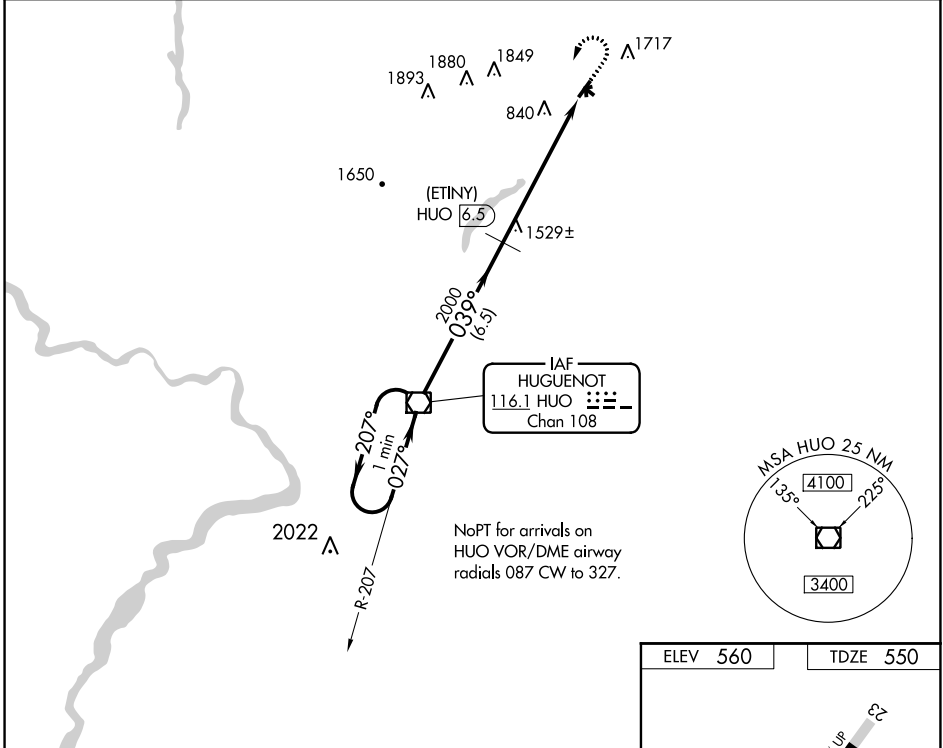
VOR/DME H <sup>UO</sup>	APP CRS	Rwy Idg	<b>3358</b>
<b>116.1</b>	<b>039°</b>	TDZE	<b>550</b>
Chan <b>108</b>		Apt Elev	<b>560</b>

# VOR/DME or GPS RWY 5

WURTSBORO-SULLIVAN COUNTY (N82)

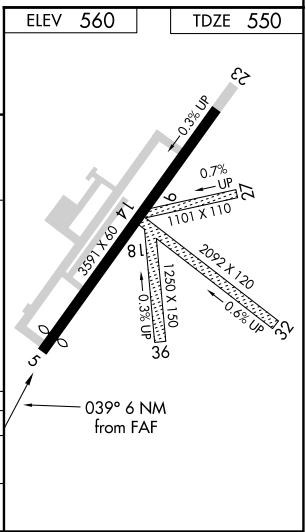
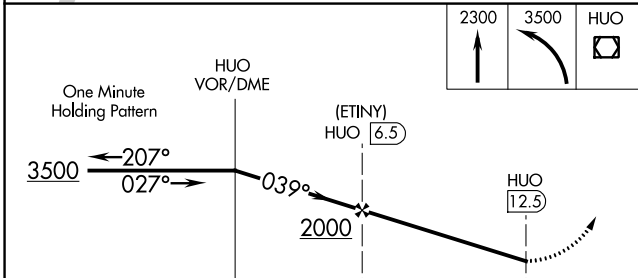
<p><b>▼</b> Obtain local altimeter setting on CTAF, when not received, procedure not authorized.</p> <p><b>▲</b> NA Procedure not authorized at night.</p>	<p>MISSED APPROACH: Climb to 2300 then climbing left turn to 3500 direct H<sup>UO</sup> VOR/DME and hold.</p>
--	---

<p>NEW YORK APP CON</p> <p><b>132.75 363.1</b></p>	<p>UNICOM</p> <p><b>122.8</b> (CTAF)</p>
--	--



NE-2, 16 JUL 2020 to 13 AUG 2020

NE-2, 16 JUL 2020 to 13 AUG 2020



CATEGORY	A	B	C	D
S-5	1880-1¼ 1330 (1400-1¼)	1880-1½ 1330 (1400-1½)	1880-3 1330 (1400-3)	NA
CIRCLING	1880-1¼ 1320 (1400-1¼)	1880-1½ 1320 (1400-1½)	2020-3 1460 (1500-3)	NA