


WAAS CH 70425 W02A	APP CRS 016°	Rwy ldg 5500 TDZE 666 Apt Elev 666
----------------------------------------	------------------------	---------------------------------------------------------------

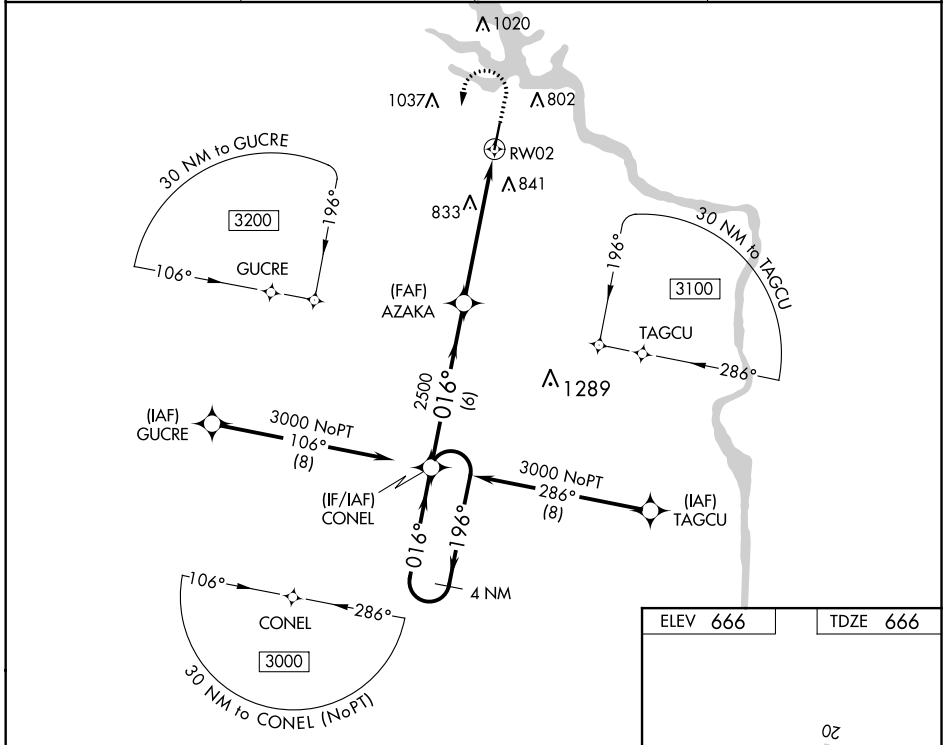
RNAV (GPS) RWY 2

ROCK HILL/YORK COUNTY/BRYANT FIELD (UZA)

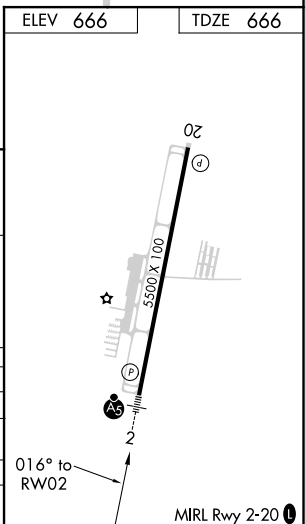
⚠ Baro-VNAV and VDP NA when using Charlotte/Douglas Intl altimeter setting. For uncompensated Baro-VNAV systems, LNAV/VNAV NA below -9°C (16°F) or above 54°C (130°F). DME/DME RNP-0.3 NA. When local altimeter setting not received, use Charlotte/Douglas Intl altimeter setting and increase all DA 45 feet and all MDA 60 feet. Increase LNAV/VNAV all Cats visibility 1/8 mile and LNAV Cat C/D visibility 1/4 mile.

MALSR  MISSED APPROACH: Climb to 1600 then climbing left turn to 3000 direct CONEL and hold.

ASOS 120.775	CHARLOTTE APP CON 120.05 307.8	CLNC DEL 126.85	UNICOM 123.05 (CTAF) 0
------------------------	------------------------------------------	---------------------------	----------------------------------



4 NM Holding Pattern	CONEL		1600	3000	CONEL
	← 196°	→ 016°	↑	↻	✧
GP 3.00° TCH 41		AZAKA	*1.2 NM to RW02	*LNAV only.	
	← 196°	→ 076°	2500	2500	RW02
			6 NM	4.4 NM	1.2 NM
CATEGORY	A	B	C	D	
LPV DA		866-1/2	200 (200-1/2)		
LNAV/VNAV DA		1022-3/4	356 (400-3/4)		
LNAV MDA	1100-1/2	434 (500-1/2)	1100-3/4	434 (500-3/4)	
C CIRCLING	1140-1 474 (500-1)	1160-1 494 (500-1)	1340-2 674 (700-2)	1340-2 1/4 674 (700-2 1/4)	



SE-2, 16 JUL 2020 to 13 AUG 2020

SE-2, 16 JUL 2020 to 13 AUG 2020