

(KWEEN4.KWEEN) 19003

AL-5361 (FAA)

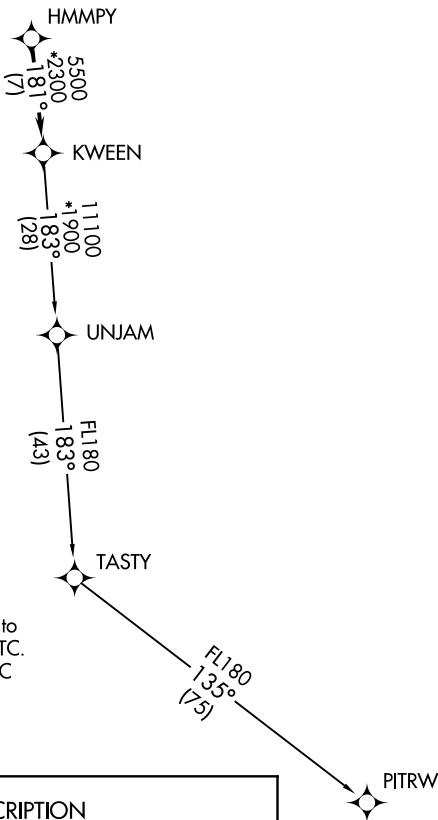
ROCK HILL/YORK COUNTY/BRYANT FIELD (UZA)  
ROCK HILL, SOUTH CAROLINA

# KWEEN FOUR DEPARTURE (RNAV)

ASOS  
120.775  
CLNC DEL  
126.85  
UNICOM (CTAF)  
123.05  
CHARLOTTE DEP CON  
120.05 307.8

**TOP ALTITUDE:  
3000**

TAKEOFF MINIMUMS  
Rwys 2, 20: Standard.



- NOTE: For turbojets only.
- NOTE: DME/DME/IRU or GPS required.
- NOTE: RNAV 1.
- NOTE: RADAR required.
- NOTE: If unable to accept climb rates, advise ATC on initial contact.
- NOTE: Upon reaching 10000 MSL, accelerate to and maintain 280K, if unable advise ATC.
- NOTE: Transponder code will be issued via PDC or Charlotte CLNC DEL.

NOTE: Chart not to scale.

## DEPARTURE ROUTE DESCRIPTION

Climb on heading assigned by ATC, expect RADAR vectors to HMMPY, then on track 181° to KWEEN, then on assigned transition, maintain 3000, expect filed altitude within 10 minutes after departure.

PITRW TRANSITION (KWEEN4.PITRW)  
UNJAM TRANSITION (KWEEN4.UNJAM)

KWEEN FOUR DEPARTURE (RNAV)  
(KWEEN4.KWEEN) 03JAN19

ROCK HILL, SOUTH CAROLINA  
ROCK HILL/YORK COUNTY/BRYANT FIELD (UZA)

SE-2, 16 JUL 2020 to 13 AUG 2020

SE-2, 16 JUL 2020 to 13 AUG 2020